



ELECTRONIC COPY

LABORATORY GROWN DIAMOND REPORT

October 18, 2024	
IGI Report Number	LG660465059
Description	LABORATORY GROWN DIAMOND
Shape and Cutting Style	CUT CORNERED RECTANGULAR MODIFIED BRILLIANT
Measurements	8.10 X 5.75 X 3.91 MM

GRADING RESULTS

Carat Weight	1.54 CARAT
Color Grade	E
Clarity Grade	VS 2

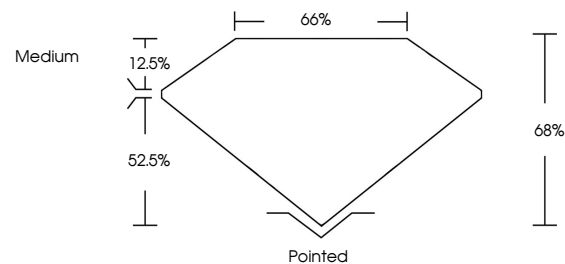
ADDITIONAL GRADING INFORMATION

Polish	EXCELLENT
Symmetry	EXCELLENT
Fluorescence	NONE
Inscription(s)	 LG660465059

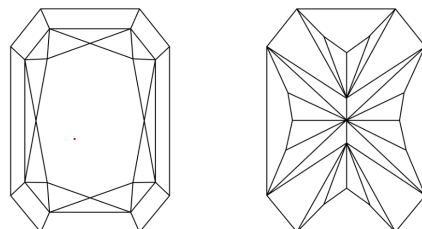
Comments: This Laboratory Grown Diamond was created by Chemical Vapor Deposition (CVD) growth process.
Type IIa

LG660465059
Report verification at lqi.org

PROPORTIONS

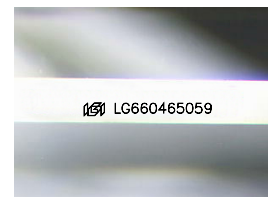


CLARITY CHARACTERISTICS



KEY TO SYMBOLS

Red symbols indicate internal characteristics.
Green symbols indicate external characteristics.



Sample Image Used

COLOR

D E F G H I J Faint Very Light Light

CLARITY

IF	VVS ¹⁻²	VS ¹⁻²	SI ¹⁻²	I ¹⁻³
Internally Flawless	Very Very Slightly Included	Very Slightly Included	Slightly Included	Included



© IGI 2020, International Gemological Institute

FD - 10 20

www.igi.org

LABORATORY GROWN DIAMOND REPORT

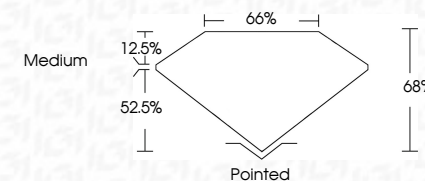


October 18, 2024	
IGI Report Number	LG660465059
Description	LABORATORY GROWN DIAMOND
Shape and Cutting Style	CUT CORNERED RECTANGULAR MODIFIED BRILLIANT

Measurements **8.10 X 5.75 X 3.91 MM**

GRADING RESULTS

Carat Weight	1.54 CARAT
Color Grade	E
Clarity Grade	VVS2



ADDITIONAL GRADING INFORMATION

Polish	EXCELLENT
Symmetry	EXCELLENT
Fluorescence	NONE
Inscription(s)	181 LG 660465055

Comments: This Laboratory Grown Diamond was created by Chemical Vapor Deposition (CVD) growth process.
Type IIa



October 18, 2024	
GJ Report No LG604045059	
CUT CORNERED RECT. MODIFIED BRILLIANT	
1.54 CARAT	VVS 2
	68%
	66%
	Medium
	Poished
	EXCELLENT
	EXCELLENT
	NONE
	(GSI LG604045059)
Color Weight	
Carat Grade	Clarity Grade
10 X 7.75 X 3.91 MM	
	Depth
	Table
	Girdle
	Culet
	Polish
	Symmetry
	Fluorescence
	Inscriptions(s)
Comments:	
This Laboratory Grown Diamond was created by Chemical Vapor Deposition (CVD) growth process.	
Type IIA	