



ELECTRONIC COPY

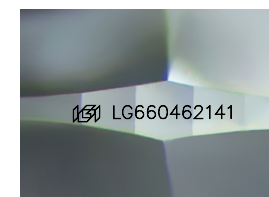
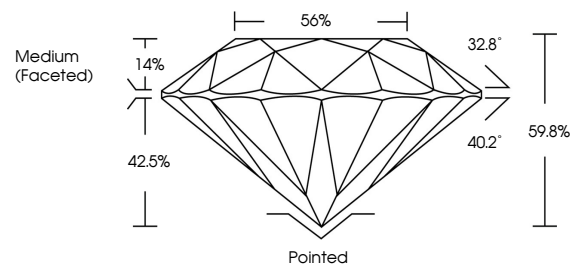
LG660462141
Report verification at igi.org



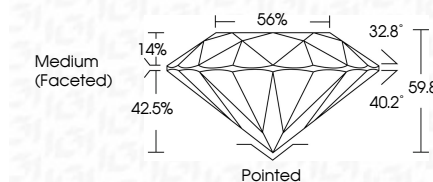
November 25, 2024
IGI Report Number **LG660462141**
Description **LABORATORY GROWN DIAMOND**
Shape and Cutting Style **ROUND BRILLIANT**
Measurements **7.67 - 7.74 X 4.61 MM**
GRADING RESULTS
Carat Weight **1.66 CARAT**
Color Grade **FANCY INTENSE PINK**
Clarity Grade **SI 1**
Cut Grade **IDEAL**

November 25, 2024
IGI Report Number **LG660462141**
Description **LABORATORY GROWN DIAMOND**
Shape and Cutting Style **ROUND BRILLIANT**
Measurements **7.67 - 7.74 X 4.61 MM**
GRADING RESULTS
Carat Weight **1.66 CARAT**
Color Grade **FANCY INTENSE PINK**
Clarity Grade **SI 1**
Cut Grade **IDEAL**

PROPORTIONS



Sample Image Used



ADDITIONAL GRADING INFORMATION

Polish **EXCELLENT**
Symmetry **EXCELLENT**
Fluorescence **SLIGHT**
Inscription(s) **IGI LG660462141**

Comments: This Laboratory Grown Diamond was created by Chemical Vapor Deposition (CVD) growth process.
Indications of post-growth treatment.

COLOR

D E F G H I J Faint Very Light Light

CLARITY

IF VS¹⁻² VS¹⁻² SI¹⁻² I¹⁻³

Internally Flawless Very Very Slightly Included Very Slightly Included Slightly Included Included

ADDITIONAL GRADING INFORMATION

Polish **EXCELLENT**
Symmetry **EXCELLENT**
Fluorescence **SLIGHT**
Inscription(s) **IGI LG660462141**

Comments: This Laboratory Grown Diamond was created by Chemical Vapor Deposition (CVD) growth process.
Indications of post-growth treatment.



IGI



November 25, 2024
IGI Report No **LG660462141**
ROUND BRILLIANT
7.67 - 7.74 X 4.61 MM
Carat Weight **1.66 CARAT**
Color Grade **FANCY INTENSE PINK**
Clarity Grade **SI 1**
Depth **IDEAL**
Table **59.8%**
Girdle **56%**
Medium (Faceted)
Culet **Pointed**
Polish **EXCELLENT**
Symmetry **EXCELLENT**
Fluorescence **SLIGHT**
Inscriptions(s) **IGI LG660462141**
Comments: This Laboratory Grown Diamond was created by Chemical Vapor Deposition (CVD) growth process.
Indications of post-growth treatment.