



ELECTRONIC COPY

LABORATORY GROWN DIAMOND REPORT

October 18, 2024
IGI Report Number LG660455957
Description LABORATORY GROWN DIAMOND
Shape and Cutting Style CUT CORNERED RECTANGULAR MODIFIED BRILLIANT
Measurements 7.64 X 5.41 X 3.63 MM

GRADING RESULTS

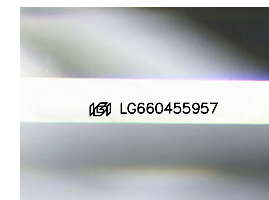
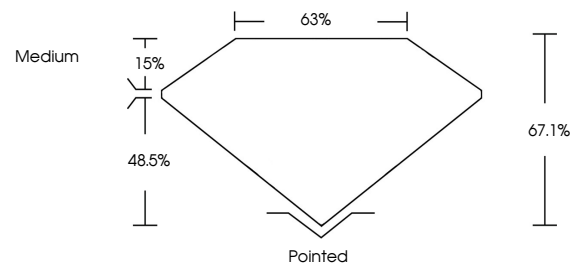
Carat Weight 1.28 CARAT
Color Grade D
Clarity Grade VS 1

ADDITIONAL GRADING INFORMATION

Polish EXCELLENT
Symmetry EXCELLENT
Fluorescence NONE
Inscription(s) LG660455957

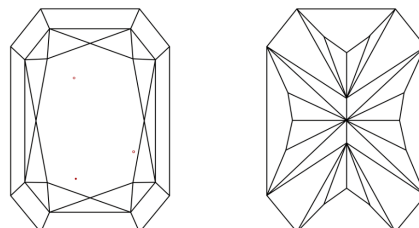
Comments: This Laboratory Grown Diamond was created by Chemical Vapor Deposition (CVD) growth process.
Type IIa

PROPORTIONS



Sample Image Used

CLARITY CHARACTERISTICS



KEY TO SYMBOLS

Red symbols indicate internal characteristics.
Green symbols indicate external characteristics.

COLOR

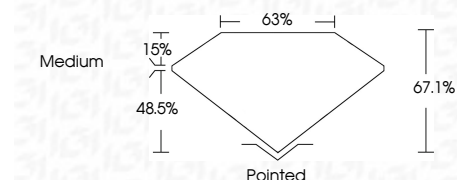
D E F G H I J Faint Very Light Light

CLARITY

IF VS 1-2 VS 1-2 SI 1-2 I 1-3
Internally Flawless Very Very Slightly Included Very Slightly Included Slightly Included Included



October 18, 2024
IGI Report Number LG660455957
Description LABORATORY GROWN DIAMOND
Shape and Cutting Style CUT CORNERED RECTANGULAR MODIFIED BRILLIANT
Measurements 7.64 X 5.41 X 3.63 MM
GRADING RESULTS
Carat Weight 1.28 CARAT
Color Grade D
Clarity Grade VS 1



ADDITIONAL GRADING INFORMATION

Polish EXCELLENT
Symmetry EXCELLENT
Fluorescence NONE
Inscription(s) LG660455957
Comments: This Laboratory Grown Diamond was created by Chemical Vapor Deposition (CVD) growth process.
Type IIa



October 18, 2024
IGI Report No LG660455957
CUT CORNERED RECT. MODIFIED BRILLIANT
7.64 X 5.41 X 3.63 MM
1.28 CARAT
D
Color Grade
VS 1
Depth 48.5%
Table 15%
Medium
Pointed
EXCELLENT
EXCELLENT
NONE
IGI LG660455957
Comments: This Laboratory Grown Diamond was created by Chemical Vapor Deposition (CVD) growth process.
Type IIa