

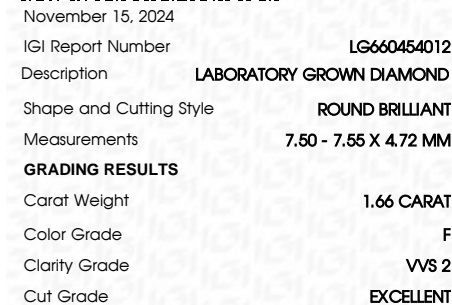


ELECTRONIC COPY

LABORATORY GROWN DIAMOND REPORT

LG660454012
Report verification at igi.org

LABORATORY GROWN DIAMOND REPORT



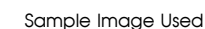
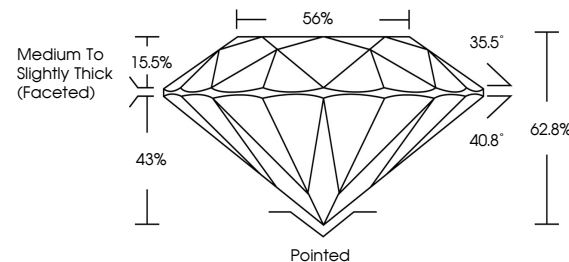
| | |
|-------------------------|--------------------------|
| November 15, 2024 | |
| IGI Report Number | LG660454012 |
| Description | LABORATORY GROWN DIAMOND |
| Shape and Cutting Style | ROUND BRILLIANT |
| Measurements | 7.50 - 7.55 X 4.72 MM |
| GRADING RESULTS | |
| Carat Weight | 1.66 CARAT |
| Color Grade | F |
| Clarity Grade | VVS 2 |
| Cut Grade | EXCELLENT |

ADDITIONAL GRADING INFORMATION

| | |
|----------------|----------------|
| Polish | EXCELLENT |
| Symmetry | EXCELLENT |
| Fluorescence | NONE |
| Inscription(s) | 15 LG660454012 |

Comments: This Laboratory Grown Diamond was created by Chemical Vapor Deposition (CVD) growth process.
Type IIa

PROPORTIONS

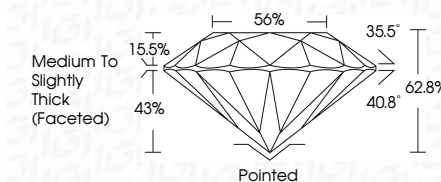


COLOR

D E F G H I J Faint Very Light Light

CLARITY

| IF | VVS ^{1,2} | VS ^{1,2} | SI ^{1,2} | I ^{1,3} |
|---------------------|-----------------------------|------------------------|-------------------|------------------|
| Internally Flawless | Very Very Slightly Included | Very Slightly Included | Slightly Included | Included |



ADDITIONAL GRADING INFORMATION

| | |
|--|--|
| Polish | EXCELLENT |
| Symmetry | EXCELLENT |
| Fluorescence | NONE |
| Inscription(s) |  LG66045012 |
| Comments: This Laboratory Grown Diamond was created by Chemical Vapor Deposition (CVD) growth process. | |
| Type IIa | |



© IGI 2020, International Gemmological Institute

FD - 10 20

www.igi.org



November 15, 2024
IGI Report No LG660454012
ROUND BRILLIANT

| | | |
|-----------------------|---------------|------------------------------------|
| 1.90 - 7.55 X 4.72 MM | Carat Weight | 1.66 CARAT |
| | Color Grade | F |
| | Clarity Grade | VVS 2 |
| | Cut Grade | EXCELLENT |
| | Depth | 62.8% |
| | Table | 56% |
| | Girdle | Medium to Slightly Thick (faceted) |
| | Culet | Pointed |
| | Polish | EXCELLENT |
| | Symmetry | EXCELLENT |
| | Fluorescence | NONE |
| | Report # | 6012404961013 |

Comments:
This Laboratory Grown Diamond was created by Chemical Vapor Deposition (CVD) growth process.