



ELECTRONIC COPY

LG660453422
Report verification at igi.org



October 27, 2024
IGI Report Number **LG660453422**
Description **LABORATORY GROWN DIAMOND**
Shape and Cutting Style **CUSHION MODIFIED BRILLIANT**
Measurements **6.30 X 5.64 X 3.36 MM**
GRADING RESULTS
Carat Weight **1.02 CARAT**
Color Grade **FANCY INTENSE YELLOW**
Clarity Grade **VVS 2**

LABORATORY GROWN DIAMOND REPORT

October 27, 2024
IGI Report Number **LG660453422**
Description **LABORATORY GROWN DIAMOND**
Shape and Cutting Style **CUSHION MODIFIED BRILLIANT**
Measurements **6.30 X 5.64 X 3.36 MM**

GRADING RESULTS

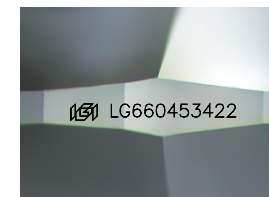
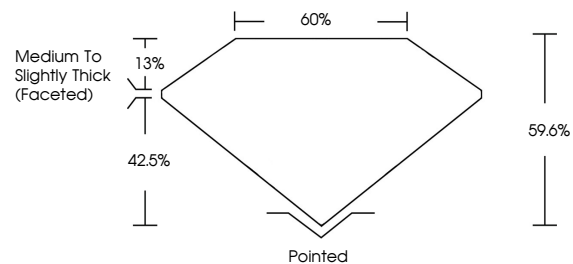
Carat Weight **1.02 CARAT**
Color Grade **FANCY INTENSE YELLOW**
Clarity Grade **VVS 2**

ADDITIONAL GRADING INFORMATION

Polish **EXCELLENT**
Symmetry **EXCELLENT**
Fluorescence **NONE**
Inscription(s) **LG660453422**

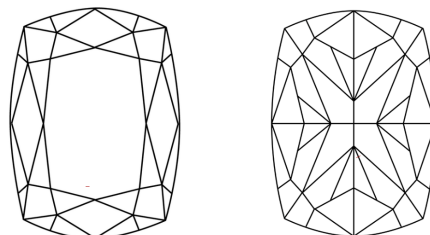
Comments: This Laboratory Grown Diamond was created by Chemical Vapor Deposition (CVD) growth process.

PROPORTIONS



Sample Image Used

CLARITY CHARACTERISTICS



KEY TO SYMBOLS

Red symbols indicate internal characteristics.
Green symbols indicate external characteristics.

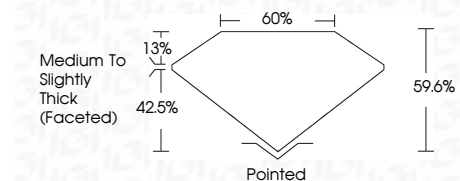
COLOR

D E F G H I J Faint Very Light Light

CLARITY

IF VS¹⁻² VS¹⁻² SI¹⁻² I¹⁻³

Internally Flawless Very Very Slightly Included Very Slightly Included Slightly Included Included



ADDITIONAL GRADING INFORMATION

Polish **EXCELLENT**
Symmetry **EXCELLENT**
Fluorescence **NONE**
Inscription(s) **LG660453422**
Comments: This Laboratory Grown Diamond was created by Chemical Vapor Deposition (CVD) growth process.



October 27, 2024
IGI Report No **LG660453422**
CUSHION MODIFIED BRILLIANT
6.30 X 5.64 X 3.36 MM
Carat Weight **1.02 CARAT**
Color Grade **FANCY INTENSE YELLOW**
Clarity Grade **VVS 2**
Depth **42.5%**
Table **13%**
Girdle **Medium to Slightly Thick (Faceted)**
Culet **Pointed**
Polish **EXCELLENT**
Symmetry **EXCELLENT**
Fluorescence **NONE**
Inscription(s) **LG660453422**
Comments: This Laboratory Grown Diamond was created by Chemical Vapor Deposition (CVD) growth process.