

ELECTRONIC COPY

LABORATORY GROWN DIAMOND REPORT

October 18, 2024	
IGI Report Number	LG660441973
Description	LABORATORY GROWN DIAMOND
Shape and Cutting Style	CUT CORNERED RECTANGULAR MODIFIED BRILLIANT
Measurements	8.32 X 5.71 X 3.85 MM

GRADING RESULTS

Carat Weight	1.59 CARAT
Color Grade	E
Clarity Grade	VS 1

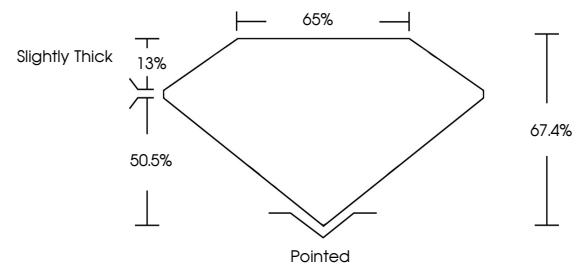
ADDITIONAL GRADING INFORMATION

Polish	EXCELLENT
Symmetry	EXCELLENT
Fluorescence	NONE
Inscription(s)	 LG660441973

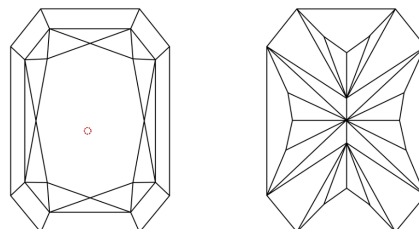
Comments: This Laboratory Grown Diamond was created by Chemical Vapor Deposition (CVD) growth process.
Type IIa

LG660441973
Report verification at igi.org

PROPORTIONS

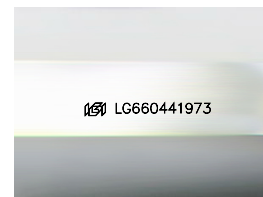


CLARITY CHARACTERISTICS



KEY TO SYMBOLS

Red symbols indicate internal characteristics.
Green symbols indicate external characteristics.



Sample Image Used

COLOR

D E F G H I J Faint Very Light Light

CLARITY

IF	VVS ¹⁻²	VS ¹⁻²	SI ¹⁻²	I ¹⁻³
Internally Flawless	Very Very Slightly Included	Very Slightly Included	Slightly Included	Included



© IGI 2020, International Gemological Institute

FD - 10 20

www.igi.org

LABORATORY GROWN DIAMOND REPORT

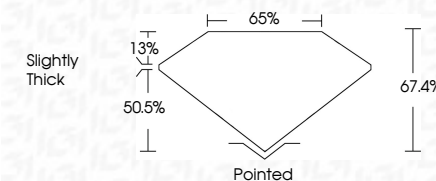


October 18, 2024	
IGI Report Number	LG660441973
Description	LABORATORY GROWN DIAMOND
Shape and Cutting Style	CUT CORNERED RECTANGULAR MODIFIED BRILLIANT

Measurements **8.32 X 5.71 X 3.85 MM**

GRADING RESULTS

Carat Weight	1.59 CARAT
Color Grade	E
Clarity Grade	VS 1



ADDITIONAL GRADING INFORMATION

Polish	EXCELLENT
Symmetry	EXCELLENT
Fluorescence	NONE
Inscription(s)	(15) LG660441973

Comments: This Laboratory Grown Diamond was created by Chemical Vapor Deposition (CVD) growth process.
Type IIa



October 18, 2024	GI Report No LG54041973	1.59 CARAT	VS 1	Slightly Thick	Polished EXCELLENT EXCELLENT EXCELLENT NONE	None No No No No	Serial LG54041973
CU CORNERED RECT, MODIFIED BRILLIANT	Color Weight	67.4%					
3.32 X 5.71 X 3.95 MM	Color Grade	65%					
	Clarity Grade						
	Depth						
	Table						
	Grade						
	Culet						
	Polish						
	Symmetry						
	Fluorescence						
	Inscriptions(s)						

Comments:
This Laboratory Grown Diamond was created by Chemical Vapor Deposition (CVD) growth process.