

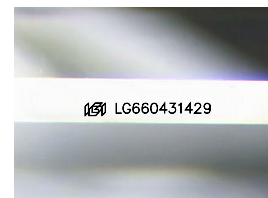
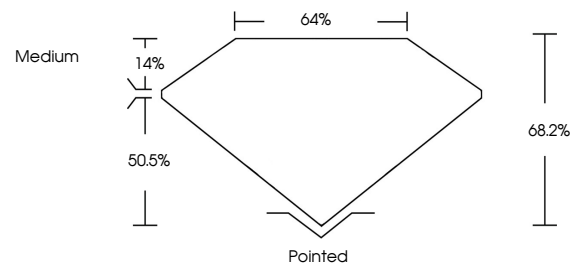


ELECTRONIC COPY

LABORATORY GROWN DIAMOND REPORT

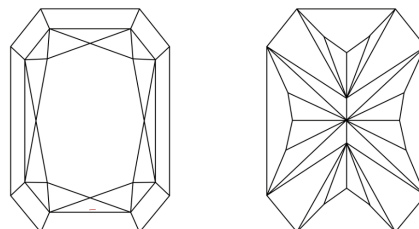
LG660431429
Report verification at igi.org

PROPORTIONS



Sample Image Used

CLARITY CHARACTERISTICS



KEY TO SYMBOLS

Red symbols indicate internal characteristics.
Green symbols indicate external characteristics.

COLOR

D E F G H I J Faint Very Light Light

CLARITY

IF	VVS ¹⁻²	VS ¹⁻²	SI ¹⁻²	I ¹⁻³
Internally Flawless	Very Very Slightly Included	Very Slightly Included	Slightly Included	Included



© IGI 2020, International Gemological Institute

FD - 10 20

www.igi.org

LABORATORY GROWN DIAMOND REPORT



October 16, 2024

IGI Report Number **LG660431429**Description **LABORATORY GROWN DIAMOND**

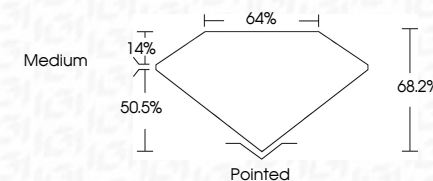
Shape and Cutting Style

Measurements 8.15 X 5.60 X 3.82 MM

GRADING RESULTS

Carat Weight 1.53 CARAT

Color Grade D

Clarity Grade VVS 2

ADDITIONAL GRADING INFORMATION

Polish EXCELLENT

Symmetry **EXCELLENT**Fluorescence **NONE**Inscription(s) LG660431429

Comments: This Laboratory Grown Diamond was created by Chemical Vapor Deposition (CVD) growth process.
Type IIa



October 16, 2024	CU Report No LG60403 1269	GT CORNERED RECT, MODIFIED BRILLIANT
15.15 X 5.60 X 3.82 MM	Carat Weight	1.53 CARAT
Color Grade		D
Clarity Grade		VVS 2
Depth		68.2%
Table		64%
Grade		Medium
Fluorescence		Pointed
Symmetry		EXCELLENT
Inscription(s)		EXCELLENT
		NONE
		#681 LG60403 1269

Comments:
 This Laboratory Grown Diamond was
 created by Chemical Vapor Deposition
 (CVD) growth process.
 Type IIa