



ELECTRONIC COPY

LABORATORY GROWN DIAMOND REPORT

LG660425261
Report verification at igi.org

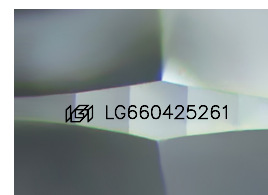
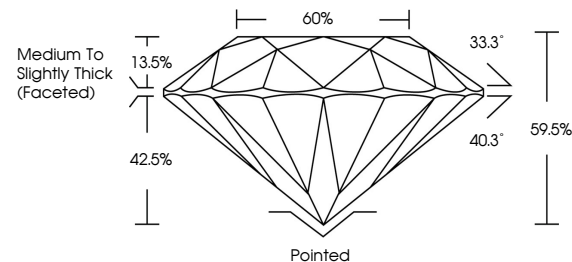
| | |
|-------------------------|--------------------------|
| October 24, 2024 | |
| IGI Report Number | LG660425261 |
| Description | LABORATORY GROWN DIAMOND |
| Shape and Cutting Style | ROUND BRILLIANT |
| Measurements | 7.12 - 7.15 X 4.25 MM |
| GRADING RESULTS | |
| Carat Weight | 1.34 CARAT |
| Color Grade | FANCY VIVID GREEN |
| Clarity Grade | VVS 2 |
| Cut Grade | EXCELLENT |

ADDITIONAL GRADING INFORMATION

| | |
|----------------|----------------|
| Polish | VERY GOOD |
| Symmetry | EXCELLENT |
| Fluorescence | NONE |
| Inscription(s) | 15 LG660425261 |

Comments: This Laboratory Grown Diamond was created by Chemical Vapor Deposition (CVD) growth process.
Indications of post-growth treatment.

PROPORTIONS



Sample Image Used

COLOR

D E F G H I J Faint Very Light Light

CLARITY

| IF | VS ¹⁻² | VS ¹⁻² | SI ¹⁻² | I ¹⁻³ |
|---------------------|-----------------------------|------------------------|-------------------|------------------|
| Internally Flawless | Very Very Slightly Included | Very Slightly Included | Slightly Included | Included |

© IGI 2020, International Gemological Institute

FD - 10 20



October 24, 2024

IGI Report Number **LG660425261**Description **LABORATORY GROWN DIAMOND**Shape and Cutting Style **ROUND BRILLIANT**

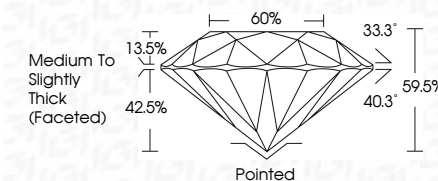
Measurements 7.12 - 7.15 X 4.25 MM

GRADING RESULTS

Carat Weight 1.34 CARAT

Color Grade **FANCY VIVID GREEN**Clarity Grade WS 2

Cut Grade **EXCELLENT**



ADDITIONAL GRADING INFORMATION

Polish **VERY GOOD**Symmetry **EXCELLENT**Fluorescence **NONE**Inscription(s) LG660425261

Comments: This Laboratory Grown Diamond was created by Chemical Vapor Deposition (CVD) growth process.
Indications of post-growth treatment.



THIS DOCUMENT WAS PRODUCED WITH THE FOLLOWING SECURITY MEASURES: SPECIAL DOCUMENT PAPER, INK SCREENS, WATERMARK, BACKGROUND DESIGNS, HOLOGRAM AND OTHER SECURITY FEATURES NOT LISTED AND DO EXCEED DOCUMENT SECURITY INDUSTRY GUIDELINES

www.igi.org

October 24, 2024
GI Report No LG660425261
ROUND BRILLIANT

| | | | |
|---------------|--------------------|------------------------------------|-----|
| | | 7-12 - 7.15 X 4.25 MM | |
| Carat Weight | Carat Weight | 1.34 CARAT | |
| Color Grade | FANCY VIVID GREEN | | |
| Clarity Grade | VVS 2 | EXCELLENT | |
| Depth | | 69.8% | 65% |
| Table | | Medium To Slightly Thick (Faceted) | |
| Girdle | | | |
| Culet | | Poined | |
| Polish | | VERY GOOD | |
| Symmetry | | EXCELLENT | |
| Fluorescence | NONE | | |
| Reference(s) | Amer 1 C&A 0405241 | | |

Comments:
This Laboratory Grown Diamond was created by Chemical Vapor Deposition (CVD) growth process.