

ELECTRONIC COPY

LABORATORY GROWN DIAMOND REPORT

November 27, 2024	
IGI Report Number	LG660415274
Description	LABORATORY GROWN DIAMOND
Shape and Cutting Style	CUT CORNERED RECTANGULAR MODIFIED BRILLIANT
Measurements	8.95 X 6.35 X 4.30 MM

GRADING RESULTS

Carat Weight	2.04 CARATS
Color Grade	D
Clarity Grade	VVS 1

ADDITIONAL GRADING INFORMATION

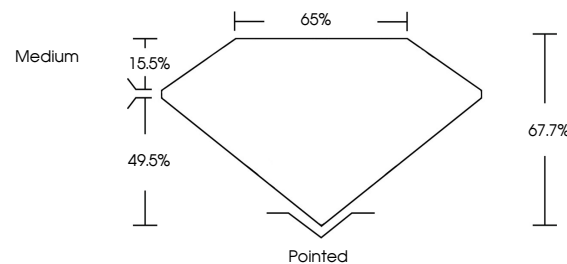
Polish	EXCELLENT
Symmetry	EXCELLENT
Fluorescence	NONE
Inscription(s)	 LG660415274

Comments: As Grown - No indication of post-growth treatment.

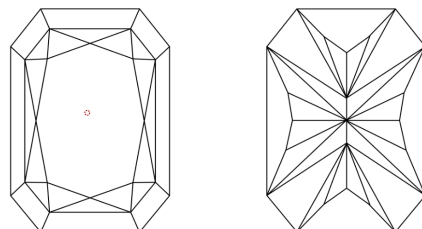
This Laboratory Grown Diamond was created by High Pressure High Temperature (HPHT) growth process.
Type II

LG660415274
Report verification at lgi.org

PROPORTIONS

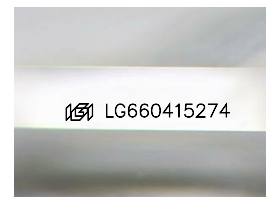


CLARITY CHARACTERISTICS



KEY TO SYMBOLS

Red symbols indicate internal characteristics.
Green symbols indicate external characteristics.



Sample Image Used

COLOR

D E F G H I J Faint Very Light Light

CLARITY

IF VWS¹⁻² VS¹⁻² SI¹⁻² I¹⁻³

Internally Flawless	Very Very Slightly Included	Very Slightly Included	Slightly Included	Included
------------------------	--------------------------------	---------------------------	----------------------	----------

LABORATORY GROWN DIAMOND REPORT

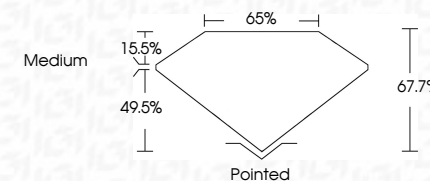


November 27, 2024	
IGI Report Number	LG660415274
Description	LABORATORY GROWN DIAMOND
Shape and Cutting Style	CUT CORNERED RECTANGULAR MODIFIED BRILLIANT

Measurements **8.95 X 6.35 X 4.30 MM**

GRADING RESULTS

Carat Weight	2.04 CARATS
Color Grade	D
Clarity Grade	VVS 1



ADDITIONAL GRADING INFORMATION

Polish	EXCELLENT
Symmetry	EXCELLENT
Fluorescence	NONE
Inscription(s)	181 LG660415274

Comments: As Grown - No indication of post-growth treatment.

This Laboratory Grown Diamond was created by High Pressure High Temperature (HPHT) growth process.



November 27, 2024	Report No. GSA00415274	2.04 CARATS
CU CORNERED RECT. MODIFIED BRILLIANT		
5.95 X 4.35 X 4.30 MM		
Color	Clarity	Weight
Grade	Grade	D
		VVS 1
		67.7%
		65%
		Medium
		Pointed
		EXCELLENT
		EXCELLENT
		NONE
		Serial GSA00415274

Comments:
As Grown - No indication of post-growth treatment.