



ELECTRONIC COPY

LG660401701
Report verification at igi.org



October 15, 2024

IGI Report Number LG660401701

Description LABORATORY GROWN DIAMOND

Shape and Cutting Style CUSHION BRILLIANT

Measurements 7.69 X 5.65 X 3.86 MM

GRADING RESULTS

Carat Weight 1.26 CARAT

Color Grade E

Clarity Grade VS 1

October 15, 2024

IGI Report Number LG660401701

Description LABORATORY GROWN DIAMOND

Shape and Cutting Style CUSHION BRILLIANT

Measurements 7.69 X 5.65 X 3.86 MM

GRADING RESULTS

Carat Weight 1.26 CARAT

Color Grade E

Clarity Grade VS 1

ADDITIONAL GRADING INFORMATION

Polish EXCELLENT

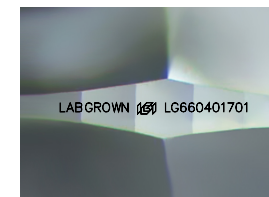
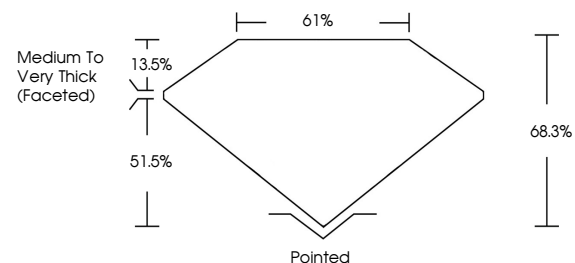
Symmetry EXCELLENT

Fluorescence NONE

Inscription(s) LABGROWN (IGI) LG660401701

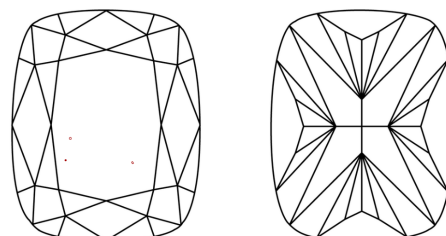
Comments: This Laboratory Grown Diamond was created by Chemical Vapor Deposition (CVD) growth process. Type IIa

PROPORTIONS



Sample Image Used

CLARITY CHARACTERISTICS



KEY TO SYMBOLS

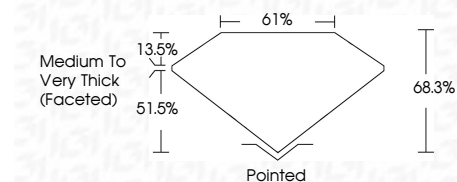
Red symbols indicate internal characteristics. Green symbols indicate external characteristics.

COLOR

D E F G H I J Faint Very Light Light

CLARITY

IF VS 1-2 VS 1-2 SI 1-2 I 1-3 Internally Flawless Very Very Slightly Included Very Slightly Included Slightly Included Included



ADDITIONAL GRADING INFORMATION

Polish EXCELLENT

Symmetry EXCELLENT

Fluorescence NONE

Inscription(s) LABGROWN (IGI) LG660401701

Comments: This Laboratory Grown Diamond was created by Chemical Vapor Deposition (CVD) growth process. Type IIa



IGI



Summary table of report details: October 15, 2024, IGI Report No LG660401701, CUSHION BRILLIANT, 1.26 CARAT, E, VS 1, 68.3%, 61%, Medium to Very Thick (Faceted), Pointed, EXCELLENT, EXCELLENT, NONE, LABGROWN (IGI) LG660401701

Comments: This Laboratory Grown Diamond was created by Chemical Vapor Deposition (CVD) growth process. Type IIa