



ELECTRONIC COPY

LG659466293
Report verification at igi.org



October 22, 2024
IGI Report Number **LG659466293**
Description **LABORATORY GROWN DIAMOND**
Shape and Cutting Style **CUT CORNERED
RECTANGULAR MODIFIED
BRILLIANT**
Measurements **8.58 X 5.54 X 3.86 MM**
GRADING RESULTS
Carat Weight **1.62 CARAT**
Color Grade **FANCY VIVID YELLOW**
Clarity Grade **VS 2**

October 22, 2024
IGI Report Number **LG659466293**
Description **LABORATORY GROWN DIAMOND**
Shape and Cutting Style **CUT CORNERED RECTANGULAR
MODIFIED BRILLIANT**
Measurements **8.58 X 5.54 X 3.86 MM**

GRADING RESULTS

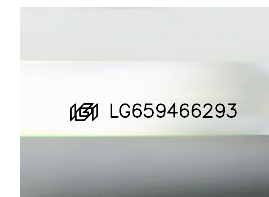
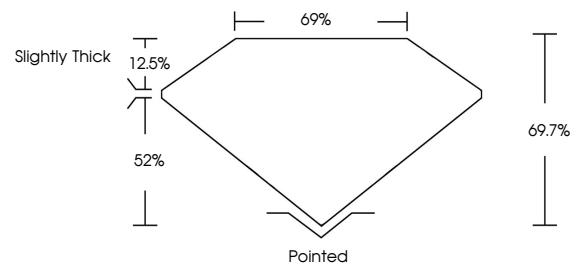
Carat Weight **1.62 CARAT**
Color Grade **FANCY VIVID YELLOW**
Clarity Grade **VS 2**

ADDITIONAL GRADING INFORMATION

Polish **EXCELLENT**
Symmetry **EXCELLENT**
Fluorescence **NONE**
Inscription(s) **IGI LG659466293**

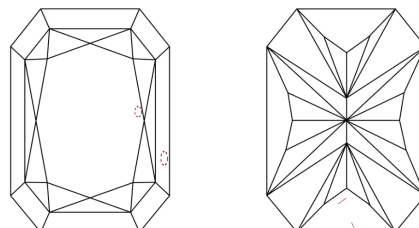
Comments: This Laboratory Grown Diamond was created by Chemical Vapor Deposition (CVD) growth process.

PROPORTIONS



Sample Image Used

CLARITY CHARACTERISTICS



KEY TO SYMBOLS

Red symbols indicate internal characteristics.
Green symbols indicate external characteristics.

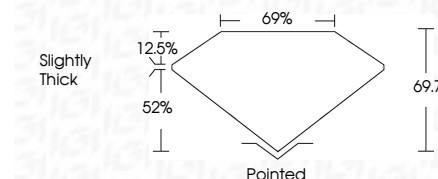
COLOR

D E F G H I J Faint Very Light Light

CLARITY

IF VS¹⁻² VS¹⁻² SI¹⁻² I¹⁻³

Internally Flawless Very Very Slightly Included Very Slightly Included Slightly Included Included



ADDITIONAL GRADING INFORMATION

Polish **EXCELLENT**
Symmetry **EXCELLENT**
Fluorescence **NONE**
Inscription(s) **IGI LG659466293**
Comments: This Laboratory Grown Diamond was created by Chemical Vapor Deposition (CVD) growth process.



IGI



October 22, 2024
IGI Report No. **LG659466293**
CUT CORNERED RECT. MODIFIED BRILLIANT
8.58 X 5.54 X 3.86 MM
Carat Weight **1.62 CARAT**
Color Grade **FANCY VIVID YELLOW**
Clarity Grade **VS 2**
Depth **69.7%**
Table **69%**
Girdle **Slightly Thick**
Culet **Pointed**
Polish **EXCELLENT**
Symmetry **EXCELLENT**
Fluorescence **NONE**
Inscription(s) **IGI LG659466293**
Comments: This Laboratory Grown Diamond was created by Chemical Vapor Deposition (CVD) growth process.