



**ELECTRONIC COPY**

LG659449811  
Report verification at igi.org



October 14, 2024  
IGI Report Number **LG659449811**  
Description **LABORATORY GROWN DIAMOND**  
Shape and Cutting Style **CUSHION BRILLIANT**  
Measurements **8.21 X 6.00 X 4.07 MM**  
**GRADING RESULTS**  
Carat Weight **1.54 CARAT**  
Color Grade **D**  
Clarity Grade **VVS 2**

**LABORATORY GROWN DIAMOND REPORT**

October 14, 2024  
IGI Report Number **LG659449811**  
Description **LABORATORY GROWN DIAMOND**  
Shape and Cutting Style **CUSHION BRILLIANT**  
Measurements **8.21 X 6.00 X 4.07 MM**

**GRADING RESULTS**

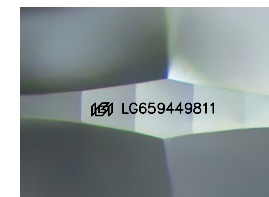
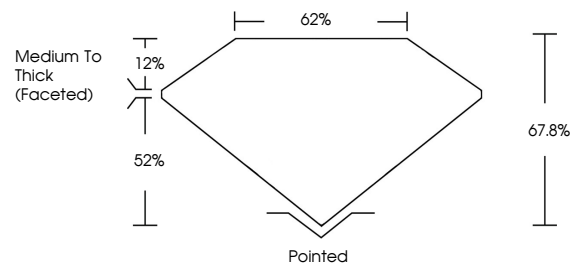
Carat Weight **1.54 CARAT**  
Color Grade **D**  
Clarity Grade **VVS 2**

**ADDITIONAL GRADING INFORMATION**

Polish **EXCELLENT**  
Symmetry **EXCELLENT**  
Fluorescence **NONE**  
Inscription(s) **LG659449811**

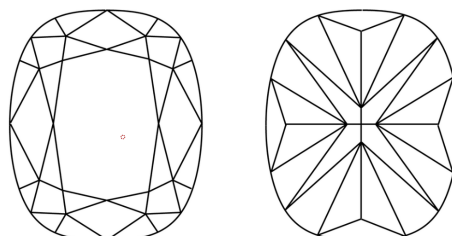
Comments: This Laboratory Grown Diamond was created by Chemical Vapor Deposition (CVD) growth process.  
Type IIa

**PROPORTIONS**



Sample Image Used

**CLARITY CHARACTERISTICS**



**KEY TO SYMBOLS**

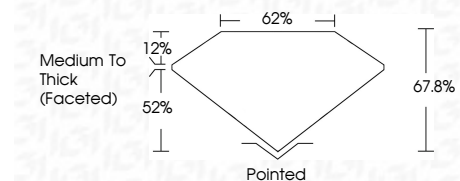
Red symbols indicate internal characteristics.  
Green symbols indicate external characteristics.

**COLOR**

D E F G H I J Faint Very Light Light

**CLARITY**

IF	VS <sup>1-2</sup>	VS <sup>1-2</sup>	SI <sup>1-2</sup>	I <sup>1-3</sup>
Internally Flawless	Very Very Slightly Included	Very Slightly Included	Slightly Included	Included



**ADDITIONAL GRADING INFORMATION**

Polish **EXCELLENT**  
Symmetry **EXCELLENT**  
Fluorescence **NONE**  
Inscription(s) **LG659449811**  
Comments: This Laboratory Grown Diamond was created by Chemical Vapor Deposition (CVD) growth process.  
Type IIa



October 14, 2024  
IGI Report No **LG659449811**  
**CUSHION BRILLIANT**  
**8.21 X 6.00 X 4.07 MM**  
Carat Weight **1.54 CARAT**  
Color Grade **D**  
Depth **52%**  
Table **62%**  
Girdle **Medium To Thick (Faceted)**  
Culet **Pointed**  
Polish **EXCELLENT**  
Symmetry **EXCELLENT**  
Fluorescence **NONE**  
Inscription(s) **LG659449811**

Comments: This Laboratory Grown Diamond was created by Chemical Vapor Deposition (CVD) growth process.  
Type IIa