



**INTERNATIONAL
GEMOLOGICAL
INSTITUTE**

ELECTRONIC COPY

LABORATORY GROWN DIAMOND REPORT

Report verification at igi.org

LABORATORY GROWN DIAMOND REPORT



October 15, 2024

IGI Report Number **LG659439445**

Description	LABORATORY GROWN DIAMOND
-------------	--------------------------

Shape and Cutting Style **EMERALD CUT**

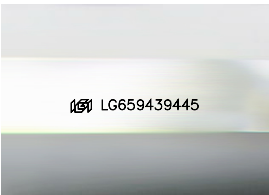
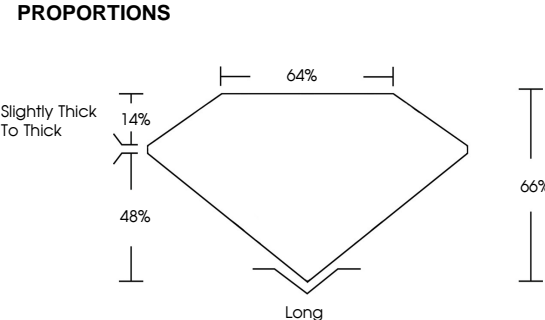
Measurements 10.52 X 7.56 X 4.99 MM

GRADING RESULTS

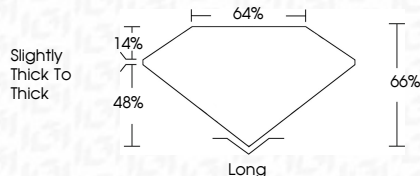
Carat Weight 4.03 CARATS

Color Grade E

Clarity Grade VS 2



Sample Image Used



ADDITIONAL GRADING INFORMATION

Polish **EXCELLENT**Symmetry **EXCELLENT**Fluorescence **NONE**Inscription(s)  LG659439445

Comments: This Laboratory Grown Diamond was created by Chemical Vapor Deposition (CVD) growth process.
Type IIa

COLOR

D E F G H I J Faint Very Light Light

CLARITY

IF VVS¹⁻² VS¹⁻² SI¹⁻² |¹⁻

Internally Flawless	Very Very Slightly Included	Very Slightly Included	Slightly Included	Included
------------------------	--------------------------------	---------------------------	----------------------	----------



© IGI 2020, International Gemological Institute

FD - 10 20



THIS DOCUMENT WAS PRODUCED WITH THE FOLLOWING SECURITY MEASURES: SPECIAL DOCUMENT PAPER, INK SCREENS, WATERMARK BACKGROUND DESIGNS, HOLOGRAM AND OTHER SECURITY FEATURES NOT LISTED AND DO EXCEED DOCUMENT SECURITY INDUSTRY GUIDELINES



IG

October 15, 2024	Report No. L65694945	
MEMO CUT	6.52 x 7.56 x 4.91 MM	4.03 CARATS
	Color Weight	E
	Color Grade	Vs2
	Clarity Grade	66%
	Depth	64%
	Table	
	Width	
		Slightly thick to Thick
	Outer	Long
	Inner	EXCELLENT
	Minimality	EXCELLENT
	Colorance	NONE
	Script(s)	pgt L65694945
Comments:	This Laboratory Grown Diamond was certified by Chemical Vapor Deposition CVD growth process. perla	

Comments:
This Laboratory Grown Diamond was created by Chemical Vapor Deposition