



ELECTRONIC COPY

LABORATORY GROWN DIAMOND REPORT

October 19, 2024
IGI Report Number LG659437815
Description LABORATORY GROWN DIAMOND
Shape and Cutting Style CUT CORNERED RECTANGULAR MODIFIED BRILLIANT
Measurements 6.96 X 4.63 X 3.28 MM

GRADING RESULTS

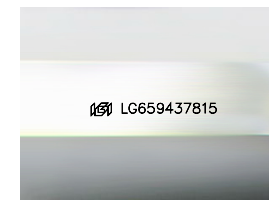
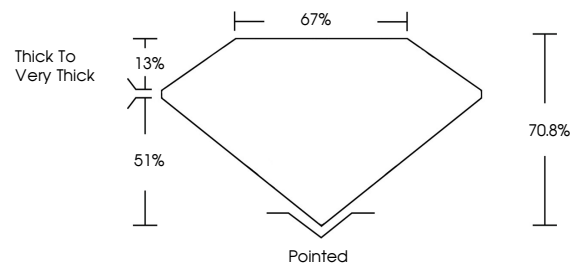
Carat Weight 1.01 CARAT
Color Grade FANCY YELLOW
Clarity Grade VVS 2

ADDITIONAL GRADING INFORMATION

Polish EXCELLENT
Symmetry EXCELLENT
Fluorescence NONE
Inscription(s) LG659437815

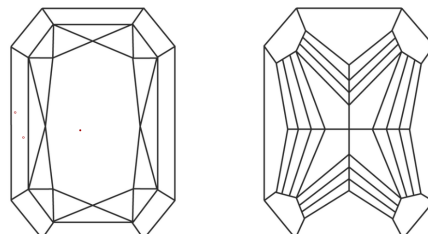
Comments: This Laboratory Grown Diamond was created by Chemical Vapor Deposition (CVD) growth process.

PROPORTIONS



Sample Image Used

CLARITY CHARACTERISTICS



KEY TO SYMBOLS

Red symbols indicate internal characteristics.
Green symbols indicate external characteristics.

COLOR

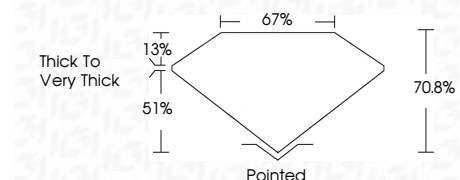
D E F G H I J Faint Very Light Light

CLARITY

IF WS 1-2 VS 1-2 SI 1-2 I 1-3
Internally Flawless Very Very Slightly Included Very Slightly Included Slightly Included Included



October 19, 2024
IGI Report Number LG659437815
Description LABORATORY GROWN DIAMOND
Shape and Cutting Style CUT CORNERED RECTANGULAR MODIFIED BRILLIANT
Measurements 6.96 X 4.63 X 3.28 MM
GRADING RESULTS
Carat Weight 1.01 CARAT
Color Grade FANCY YELLOW
Clarity Grade VVS 2



ADDITIONAL GRADING INFORMATION

Polish EXCELLENT
Symmetry EXCELLENT
Fluorescence NONE
Inscription(s) LG659437815
Comments: This Laboratory Grown Diamond was created by Chemical Vapor Deposition (CVD) growth process.



October 19, 2024
IGI Report No LG659437815
CUT CORNERED RECT. MODIFIED BRILLIANT
6.96 X 4.63 X 3.28 MM
1.01 CARAT
FANCY YELLOW
VVS 2
70.8%
67%
Thick to Very Thick
Pointed
EXCELLENT
EXCELLENT
NONE
None
 LG659437815
Comments: This Laboratory Grown Diamond was created by Chemical Vapor Deposition (CVD) growth process.