

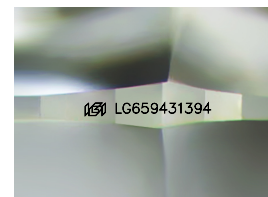
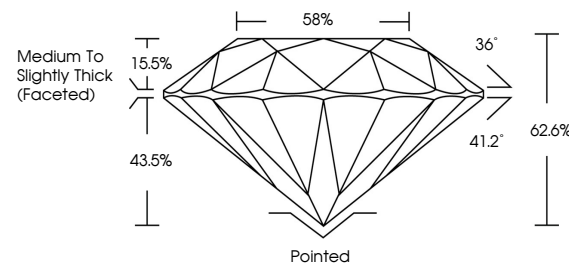


ELECTRONIC COPY

LABORATORY GROWN DIAMOND REPORT

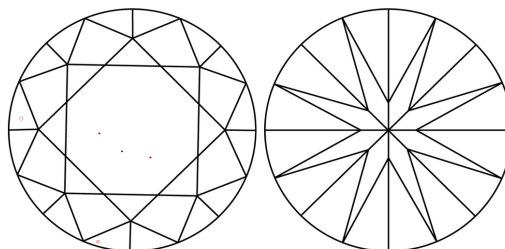
LG659431394
Report verification at igi.org

PROPORTIONS



Sample Image Used

CLARITY CHARACTERISTICS



KEY TO SYMBOLS

Red symbols indicate internal characteristics.
Green symbols indicate external characteristics.

COLOR

D E F G H I J Faint Very Light Light

CLARITY

IF	VVS ¹⁻²	VS ¹⁻²	SI ¹⁻²	I ¹⁻³
Internally Flawless	Very Very Slightly Included	Very Slightly Included	Slightly Included	Included



© IGI 2020, International Gemological Institute

FD - 10 20

www.igi.org

LABORATORY GROWN DIAMOND REPORT



October 15, 2024

IGI Report Number **LG659431394**Description **LABORATORY GROWN DIAMOND**Shape and Cutting Style **ROUND BRILLIANT**

Measurements 7.65 - 7.72 X 4.80 MM

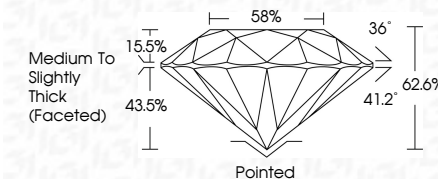
GRADING RESULTS

Carat Weight 1.75 CARAT

Color Grade F

Clarity Grade **VS 2**

Cut Grade **EXCELLENT**



ADDITIONAL GRADING INFORMATION

Polish EXCELLENT

Symmetry **EXCELLENT**Fluorescence **NONE**Inscription(s) LG659431394

Comments: This Laboratory Grown Diamond was created by Chemical Vapor Deposition (CVD) growth process.
Type IIa



October 15, 2024
IGI Report No LG659431394
ROUND BRILLIANT

7.65 - 7.72 X 4.80 MM	1.75 CARAT
Carat Weight	
Color Grade	

Color Grade	VS 2	F
Clarity Grade	EXCELLENT	
Cut Grade	40.68	
Depth		

Depth	62.6%
Table	58%
Girdle	Medium To Slightly Thick (Faceted)

Culet	Pointed
Polish	EXCELLENT
Symmetry	EXCELLENT

Fluorescence	NONE
Inscription(s)	1871 G-659431394

Comments:
This Laboratory Grown Diamond was created by Chemical Vapor Deposition (CVD) growth process.