



**INTERNATIONAL  
GEMOLOGICAL  
INSTITUTE**

**LABORATORY GROWN DIAMOND REPORT**

February 17, 2025  
 IGI Report Number **LG659428420**  
 Description **LABORATORY GROWN DIAMOND**  
 Shape and Cutting Style **ROUND BRILLIANT**  
 Measurements **6.35 - 6.38 X 3.96 MM**

**GRADING RESULTS**

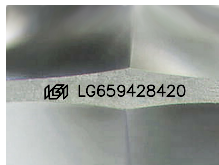
Carat Weight **0.99 CARAT**  
 Color Grade **I**  
 Clarity Grade **VS 1**  
 Cut Grade **IDEAL**

**ADDITIONAL GRADING INFORMATION**

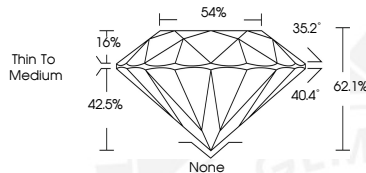
Polish **EXCELLENT**  
 Symmetry **EXCELLENT**  
 Fluorescence **NONE**  
 Inscription(s) **IGI LG659428420**  
 Comments: Presence of Subsurface inscription: Lightbox logo



**ELECTRONIC COPY**



Sample Image Used



February 17, 2025  
 IGI Report Number **LG659428420**  
 ROUND BRILLIANT  
 LABORATORY GROWN DIAMOND  
 6.35 - 6.38 X 3.96 MM  
 Carat Weight **0.99 CARAT**  
 Color Grade **I**  
 Clarity Grade **VS 1**  
 Cut Grade **IDEAL**  
 Polish **EXCELLENT**  
 Symmetry **EXCELLENT**  
 Fluorescence **NONE**  
 Inscription(s) **IGI LG659428420**  
 Comments: Presence of Subsurface inscription: Lightbox logo



February 17, 2025  
 IGI Report Number **LG659428420**  
 ROUND BRILLIANT  
 LABORATORY GROWN DIAMOND  
 6.35 - 6.38 X 3.96 MM  
 Carat Weight **0.99 CARAT**  
 Color Grade **I**  
 Clarity Grade **VS 1**  
 Cut Grade **IDEAL**  
 Polish **EXCELLENT**  
 Symmetry **EXCELLENT**  
 Fluorescence **NONE**  
 Inscription(s) **IGI LG659428420**  
 Comments: Presence of Subsurface inscription: Lightbox logo

THIS DOCUMENT WAS PRODUCED WITH THE FOLLOWING SECURITY MEASURES: SPECIAL DOCUMENT PAPER, INK SCREENS, WATERMARK, BACKGROUND DESIGN, HOLOGRAM AND OTHER SECURITY FEATURES NOT LISTED AND DO EXCEED DOCUMENT SECURITY INDUSTRY GUIDELINES.

For terms & conditions and to verify this report, please visit [www.igi.org](http://www.igi.org)