



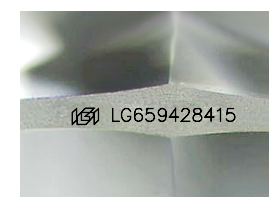
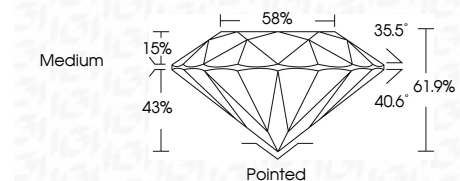
ELECTRONIC COPY

LG659428415
Report verification at igi.org

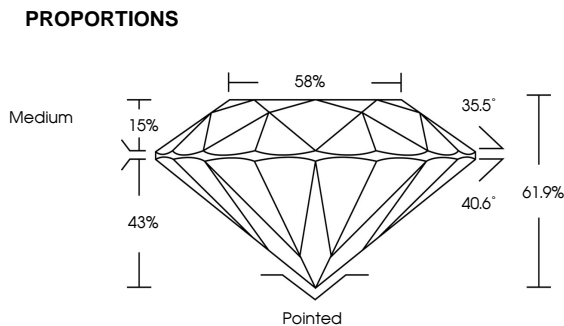


February 17, 2025
IGI Report Number **LG659428415**
Description **LABORATORY GROWN DIAMOND**
Shape and Cutting Style **ROUND BRILLIANT**
Measurements **6.38 - 6.39 X 3.96 MM**

GRADING RESULTS
Carat Weight **1.00 CARAT**
Color Grade **H**
Clarity Grade **VS 1**
Cut Grade **IDEAL**



Sample Image Used



COLOR

D E F G H I J Faint Very Light Light

CLARITY

IF WS¹⁻² VS¹⁻² SI¹⁻² I¹⁻³

Internally Flawless Very Very Slightly Included Very Slightly Included Slightly Included Included

ADDITIONAL GRADING INFORMATION

Polish **EXCELLENT**
Symmetry **EXCELLENT**
Fluorescence **NONE**
Inscription(s) **IGI LG659428415**
Comments: Presence of Subsurface inscription: Lightbox logo

February 17, 2025
IGI Report Number **LG659428415**
Description **LABORATORY GROWN DIAMOND**
Shape and Cutting Style **ROUND BRILLIANT**
Measurements **6.38 - 6.39 X 3.96 MM**
GRADING RESULTS
Carat Weight **1.00 CARAT**
Color Grade **H**
Clarity Grade **VS 1**
Cut Grade **IDEAL**

ADDITIONAL GRADING INFORMATION

Polish **EXCELLENT**
Symmetry **EXCELLENT**
Fluorescence **NONE**
Inscription(s) **IGI LG659428415**
Comments: Presence of Subsurface inscription: Lightbox logo



February 17, 2025	IGI Report No LG659428415	1.00 CARAT	H	VS 1	IDEAL	61.9%	88%	Medium	Pointed	EXCELLENT	EXCELLENT	NONE	IGI LG659428415	Comments: Presence of Subsurface inscription: Lightbox logo
IGI Report No LG659428415	ROUND BRILLIANT	6.38 - 6.39 X 3.96 MM	Color Grade	Clarity Grade	Cut Grade	Depth	Table	Girdle	Culet	Polish	Symmetry	Fluorescence	Inscription(s)	