



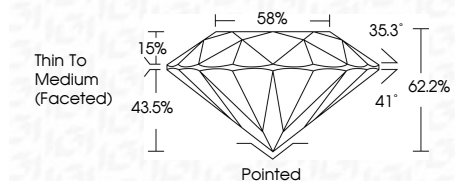
ELECTRONIC COPY

LG659428410
Report verification at igi.org



February 17, 2025
IGI Report Number **LG659428410**
Description **LABORATORY GROWN DIAMOND**
Shape and Cutting Style **ROUND BRILLIANT**
Measurements **6.41 - 6.44 X 4.00 MM**

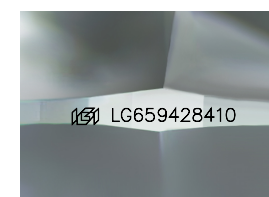
GRADING RESULTS
Carat Weight **1.02 CARAT**
Color Grade **H**
Clarity Grade **VS 1**
Cut Grade **IDEAL**



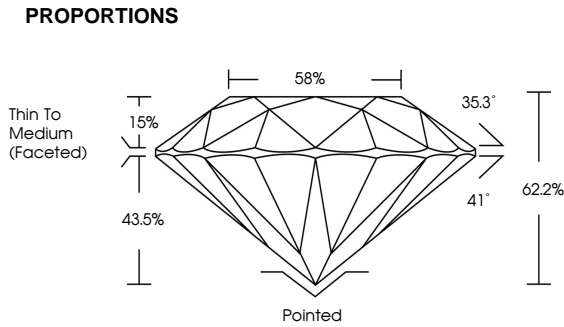
ADDITIONAL GRADING INFORMATION
Polish **EXCELLENT**
Symmetry **EXCELLENT**
Fluorescence **NONE**
Inscription(s) **IGI LG659428410**
Comments: Presence of Subsurface inscription:
Lightbox logo



February 17, 2025	IGI Report No LG659428410	1.02 CARAT	H
ROUND BRILLIANT	6.41 - 6.44 X 4.00 MM	VS 1	IDEAL
Color Grade	Cut Grade	Depth	Table
		62.2%	58%
Girdle	Thin To Medium (Faceted)	Pointed	EXCELLENT
Polish	Symmetry	Fluorescence	INSCRIPTION(S)
EXCELLENT	EXCELLENT	NONE	IGI LG659428410
Comments: Presence of Subsurface inscription: Lightbox logo			



Sample Image Used



COLOR

D	E	F	G	H	I	J	Faint	Very Light	Light
---	---	---	---	---	---	---	-------	------------	-------

CLARITY

IF	VS ¹⁻²	VS ¹⁻²	SI ¹⁻²	I ¹⁻³
Internally Flawless	Very Very Slightly Included	Very Slightly Included	Slightly Included	Included



February 17, 2025
IGI Report Number **LG659428410**
Description **LABORATORY GROWN DIAMOND**
Shape and Cutting Style **ROUND BRILLIANT**
Measurements **6.41 - 6.44 X 4.00 MM**
GRADING RESULTS
Carat Weight **1.02 CARAT**
Color Grade **H**
Clarity Grade **VS 1**
Cut Grade **IDEAL**
ADDITIONAL GRADING INFORMATION
Polish **EXCELLENT**
Symmetry **EXCELLENT**
Fluorescence **NONE**
Inscription(s) **IGI LG659428410**
Comments: Presence of Subsurface inscription: Lightbox logo