



ELECTRONIC COPY

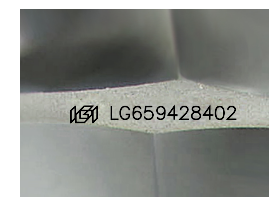
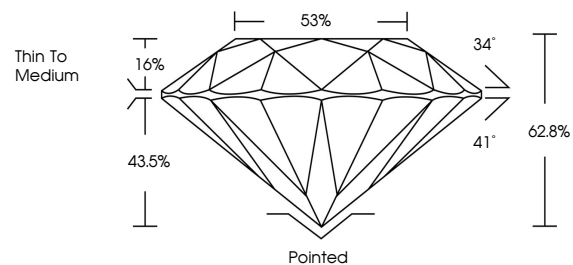
LG659428402
Report verification at igi.org



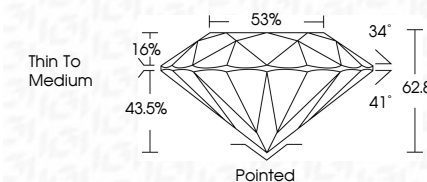
February 17, 2025
IGI Report Number **LG659428402**
Description **LABORATORY GROWN DIAMOND**
Shape and Cutting Style **ROUND BRILLIANT**
Measurements **6.47 - 6.48 X 4.07 MM**
GRADING RESULTS
Carat Weight **1.03 CARAT**
Color Grade **G**
Clarity Grade **VVS 2**
Cut Grade **EXCELLENT**

February 17, 2025
IGI Report Number **LG659428402**
Description **LABORATORY GROWN DIAMOND**
Shape and Cutting Style **ROUND BRILLIANT**
Measurements **6.47 - 6.48 X 4.07 MM**
GRADING RESULTS
Carat Weight **1.03 CARAT**
Color Grade **G**
Clarity Grade **VVS 2**
Cut Grade **EXCELLENT**

PROPORTIONS



Sample Image Used



ADDITIONAL GRADING INFORMATION
Polish **EXCELLENT**
Symmetry **EXCELLENT**
Fluorescence **NONE**
Inscription(s) **IGI LG659428402**
Comments: Presence of Subsurface inscription: Lightbox logo

COLOR

D E F G H I J Faint Very Light Light

CLARITY

IF	VS ¹⁻²	VS ¹⁻²	SI ¹⁻²	I ¹⁻³
Internally Flawless	Very Very Slightly Included	Very Slightly Included	Slightly Included	Included

ADDITIONAL GRADING INFORMATION

Polish **EXCELLENT**
Symmetry **EXCELLENT**
Fluorescence **NONE**
Inscription(s) **IGI LG659428402**
Comments: Presence of Subsurface inscription: Lightbox logo



IGI

February 17, 2025
IGI Report No **LG659428402**
ROUND BRILLIANT
6.47 - 6.48 X 4.07 MM
1.03 CARAT
Color Grade **G**
Clarity Grade **VVS 2**
Depth **EXCELLENT**
Table **62.8%**
Girdle **88%**
Thin To Medium
Culet **Pointed**
Polish **EXCELLENT**
Symmetry **EXCELLENT**
Fluorescence **NONE**
Inscription(s) **IGI LG659428402**
Comments: Presence of Subsurface inscription: Lightbox logo