



ELECTRONIC COPY

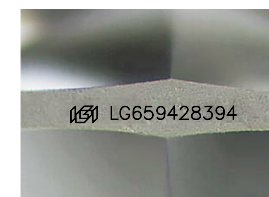
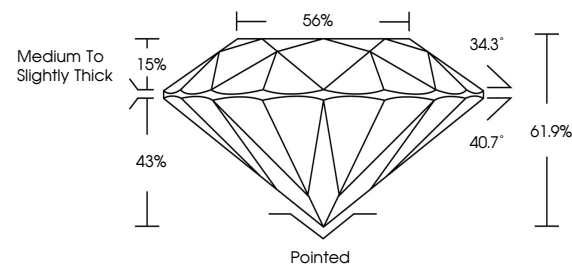
LG659428394
Report verification at igi.org



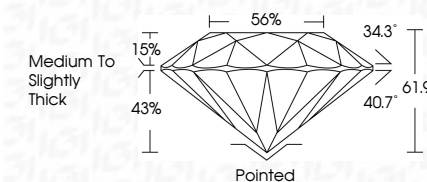
February 17, 2025
IGI Report Number **LG659428394**
Description **LABORATORY GROWN DIAMOND**
Shape and Cutting Style **ROUND BRILLIANT**
Measurements **6.50 - 6.51 X 4.03 MM**
GRADING RESULTS
Carat Weight **1.04 CARAT**
Color Grade **H**
Clarity Grade **VS 2**
Cut Grade **EXCELLENT**

February 17, 2025
IGI Report Number **LG659428394**
Description **LABORATORY GROWN DIAMOND**
Shape and Cutting Style **ROUND BRILLIANT**
Measurements **6.50 - 6.51 X 4.03 MM**
GRADING RESULTS
Carat Weight **1.04 CARAT**
Color Grade **H**
Clarity Grade **VS 2**
Cut Grade **EXCELLENT**

PROPORTIONS



Sample Image Used



ADDITIONAL GRADING INFORMATION
Polish **EXCELLENT**
Symmetry **EXCELLENT**
Fluorescence **NONE**
Inscription(s) **IGI LG659428394**
Comments: Presence of Subsurface inscription: Lightbox logo

COLOR

D E F G H I J Faint Very Light Light

CLARITY

IF	VS ¹⁻²	VS ¹⁻²	SI ¹⁻²	I ¹⁻³
Internally Flawless	Very Very Slightly Included	Very Slightly Included	Slightly Included	Included

ADDITIONAL GRADING INFORMATION

Polish **EXCELLENT**
Symmetry **EXCELLENT**
Fluorescence **NONE**
Inscription(s) **IGI LG659428394**
Comments: Presence of Subsurface inscription: Lightbox logo



IGI



February 17, 2025	1.04 CARAT	H	VS 2	61.9%	56%	Medium To Slightly Thick	Pointed	EXCELLENT	EXCELLENT	NONE	IGI LG659428394	Comments: Presence of Subsurface inscription: Lightbox logo
IGI Report No LG659428394	6.50 - 6.51 X 4.03 MM	EXCELLENT	EXCELLENT	61.9%	56%	Medium To Slightly Thick	Pointed	EXCELLENT	EXCELLENT	NONE	IGI LG659428394	
ROUND BRILLIANT	Carat Weight	Color Grade	Clarity Grade	Depth	Table	Girdle	Culet	Polish	Symmetry	Fluorescence	Inscription(s)	