



ELECTRONIC COPY

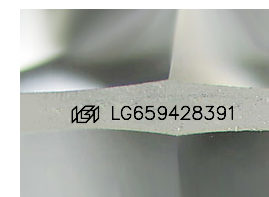
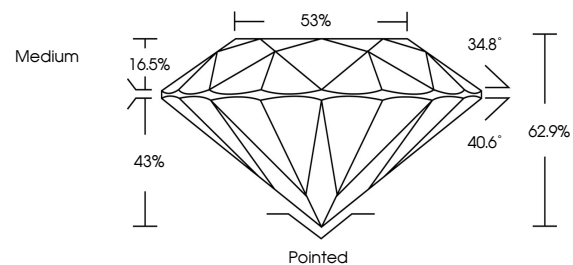
LG659428391
Report verification at igi.org



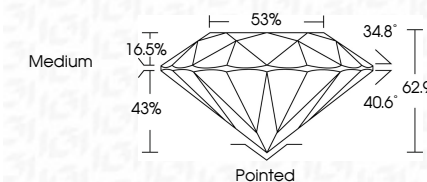
February 17, 2025
IGI Report Number **LG659428391**
Description **LABORATORY GROWN DIAMOND**
Shape and Cutting Style **ROUND BRILLIANT**
Measurements **6.40 - 6.42 X 4.04 MM**
GRADING RESULTS
Carat Weight **1.01 CARAT**
Color Grade **I**
Clarity Grade **VS 2**
Cut Grade **EXCELLENT**

February 17, 2025
IGI Report Number **LG659428391**
Description **LABORATORY GROWN DIAMOND**
Shape and Cutting Style **ROUND BRILLIANT**
Measurements **6.40 - 6.42 X 4.04 MM**
GRADING RESULTS
Carat Weight **1.01 CARAT**
Color Grade **I**
Clarity Grade **VS 2**
Cut Grade **EXCELLENT**

PROPORTIONS



Sample Image Used



ADDITIONAL GRADING INFORMATION

Polish **EXCELLENT**
Symmetry **VERY GOOD**
Fluorescence **NONE**
Inscription(s) **IGI LG659428391**
Comments: Presence of Subsurface inscription: Lightbox logo

ADDITIONAL GRADING INFORMATION

Polish **EXCELLENT**
Symmetry **VERY GOOD**
Fluorescence **NONE**
Inscription(s) **IGI LG659428391**
Comments: Presence of Subsurface inscription: Lightbox logo

COLOR

D E F G H I J Faint Very Light Light

CLARITY

IF WS¹⁻² VS¹⁻² SI¹⁻² I¹⁻³

Internally Flawless Very Very Slightly Included Very Slightly Included Slightly Included Included



IGI



February 17, 2025	IGI Report No LG659428391	1.01 CARAT	I	VS 2	62.9%	88%	Medium	Pointed	EXCELLENT	VERY GOOD	NONE	IGI LG659428391	Comments: Presence of Subsurface inscription: Lightbox logo
IGI Report No LG659428391	ROUND BRILLIANT	6.40 - 6.42 X 4.04 MM	Color Grade	Clarity Grade	Depth	Table	Girdle	Culet	Polish	Symmetry	Fluorescence	Inscription(s)	