



**ELECTRONIC COPY**

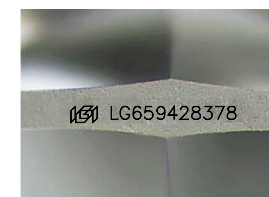
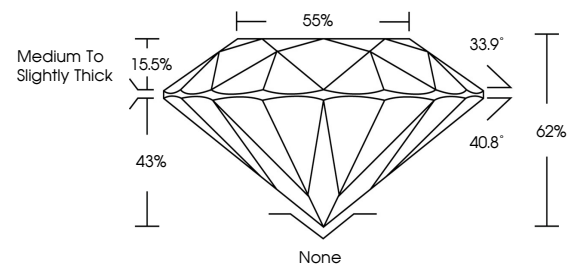
LG659428378  
Report verification at igi.org



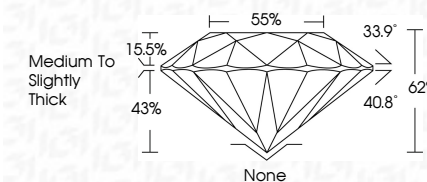
February 17, 2025  
IGI Report Number **LG659428378**  
Description **LABORATORY GROWN DIAMOND**  
Shape and Cutting Style **ROUND BRILLIANT**  
Measurements **6.50 - 6.51 X 4.04 MM**  
**GRADING RESULTS**  
Carat Weight **1.04 CARAT**  
Color Grade **H**  
Clarity Grade **VS 2**  
Cut Grade **EXCELLENT**

February 17, 2025  
IGI Report Number **LG659428378**  
Description **LABORATORY GROWN DIAMOND**  
Shape and Cutting Style **ROUND BRILLIANT**  
Measurements **6.50 - 6.51 X 4.04 MM**  
**GRADING RESULTS**  
Carat Weight **1.04 CARAT**  
Color Grade **H**  
Clarity Grade **VS 2**  
Cut Grade **EXCELLENT**

**PROPORTIONS**



Sample Image Used



**ADDITIONAL GRADING INFORMATION**

Polish **EXCELLENT**  
Symmetry **EXCELLENT**  
Fluorescence **NONE**  
Inscription(s) **IGI LG659428378**  
Comments: Presence of Subsurface inscription: Lightbox logo

**ADDITIONAL GRADING INFORMATION**

Polish **EXCELLENT**  
Symmetry **EXCELLENT**  
Fluorescence **NONE**  
Inscription(s) **IGI LG659428378**  
Comments: Presence of Subsurface inscription: Lightbox logo

**COLOR**

D E F G H I J Faint Very Light Light

**CLARITY**

IF WS<sup>1-2</sup> VS<sup>1-2</sup> SI<sup>1-2</sup> I<sup>1-3</sup>

Internally Flawless Very Very Slightly Included Very Slightly Included Slightly Included Included



**IGI**



February 17, 2025	1.04 CARAT	H	VS 2	EXCELLENT	62%	65%	Medium To Slightly Thick	None	EXCELLENT	EXCELLENT	NONE	IGI LG659428378
IGI Report No LG659428378	Carat Weight	Color Grade	Clarity Grade	Cut Grade	Depth	Table	Girdle	Color	Polish	Symmetry	Fluorescence	Inscription(s)
ROUND BRILLIANT	6.50 - 6.51 X 4.04 MM	H	VS 2	EXCELLENT	62%	65%	Medium To Slightly Thick	None	EXCELLENT	EXCELLENT	NONE	IGI LG659428378

Comments: Presence of Subsurface inscription: Lightbox logo