



ELECTRONIC COPY

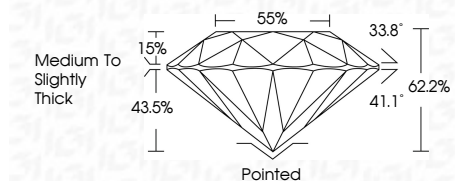
LG659428358
Report verification at igi.org



February 17, 2025
IGI Report Number **LG659428358**
Description **LABORATORY GROWN DIAMOND**
Shape and Cutting Style **ROUND BRILLIANT**
Measurements **6.50 - 6.51 X 4.05 MM**

GRADING RESULTS

Carat Weight **1.04 CARAT**
Color Grade **H**
Clarity Grade **VS 1**
Cut Grade **IDEAL**

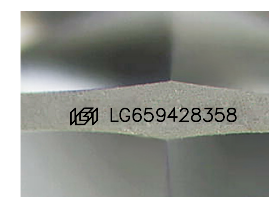


ADDITIONAL GRADING INFORMATION

Polish **EXCELLENT**
Symmetry **EXCELLENT**
Fluorescence **NONE**
Inscription(s) **(IGI) LG659428358**
Comments: Presence of Subsurface inscription:
Lightbox logo

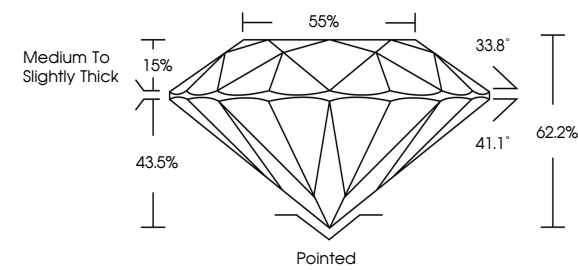


| | | | | | | | | | | | | | | |
|---------------------------|---------------------------|-----------------------|-------------|---------------|-------|-------|-------|--------------------------|---------|-----------|--------------|----------------|-------------------|--|
| February 17, 2025 | IGI Report No LG659428358 | 1.04 CARAT | H | VS 1 | IDEAL | 62.2% | 85% | Medium To Slightly Thick | Pointed | EXCELLENT | EXCELLENT | NONE | (IGI) LG659428358 | Presence of Subsurface inscription: Lightbox logo |
| IGI Report No LG659428358 | ROUND BRILLIANT | 6.50 - 6.51 X 4.05 MM | Color Grade | Clarity Grade | Depth | Table | Grade | Culet | Polish | Symmetry | Fluorescence | Inscription(s) | Comments: | |



Sample Image Used

PROPORTIONS



COLOR

| | | | | | | | | | |
|---|---|---|---|---|---|---|-------|------------|-------|
| D | E | F | G | H | I | J | Faint | Very Light | Light |
|---|---|---|---|---|---|---|-------|------------|-------|

CLARITY

| | | | | |
|---------------------|-----------------------------|------------------------|-------------------|------------------|
| IF | VS ¹⁻² | VS ¹⁻² | SI ¹⁻² | I ¹⁻³ |
| Internally Flawless | Very Very Slightly Included | Very Slightly Included | Slightly Included | Included |

