



ELECTRONIC COPY

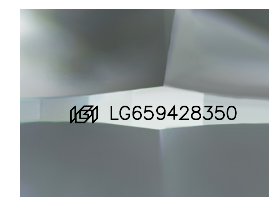
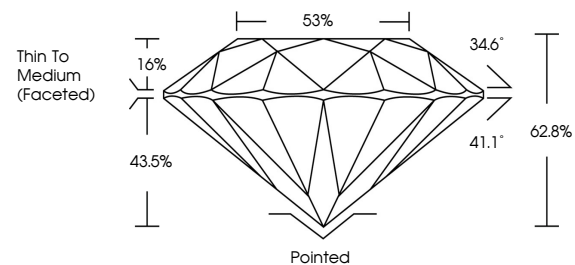
LG659428350
Report verification at igi.org



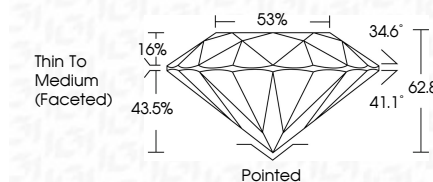
February 17, 2025
IGI Report Number **LG659428350**
Description **LABORATORY GROWN DIAMOND**
Shape and Cutting Style **ROUND BRILLIANT**
Measurements **6.48 - 6.49 X 4.08 MM**
GRADING RESULTS
Carat Weight **1.03 CARAT**
Color Grade **H**
Clarity Grade **VS 2**
Cut Grade **EXCELLENT**

February 17, 2025
IGI Report Number **LG659428350**
Description **LABORATORY GROWN DIAMOND**
Shape and Cutting Style **ROUND BRILLIANT**
Measurements **6.48 - 6.49 X 4.08 MM**
GRADING RESULTS
Carat Weight **1.03 CARAT**
Color Grade **H**
Clarity Grade **VS 2**
Cut Grade **EXCELLENT**

PROPORTIONS



Sample Image Used



ADDITIONAL GRADING INFORMATION
Polish **EXCELLENT**
Symmetry **EXCELLENT**
Fluorescence **NONE**
Inscription(s) **IGI LG659428350**
Comments: Presence of Subsurface inscription: Lightbox logo

COLOR

D E F G H I J Faint Very Light Light

CLARITY

IF WS¹⁻² VS¹⁻² SI¹⁻² I¹⁻³

Internally Flawless Very Very Slightly Included Very Slightly Included Slightly Included Included

ADDITIONAL GRADING INFORMATION

Polish **EXCELLENT**
Symmetry **EXCELLENT**
Fluorescence **NONE**
Inscription(s) **IGI LG659428350**
Comments: Presence of Subsurface inscription: Lightbox logo



February 17, 2025	1.03 CARAT	H	VS 2	EXCELLENT	62.8%	53%	Pointed	EXCELLENT	EXCELLENT	NONE	IGI LG659428350
IGI Report No LG659428350	Carat Weight	Color Grade	Clarity Grade	Cut Grade	Depth	Table	Thin To Medium (Faceted)	Polish	Symmetry	Fluorescence	Inscription(s)
ROUND BRILLIANT	6.48 - 6.49 X 4.08 MM										

Comments: Presence of Subsurface inscription: Lightbox logo