



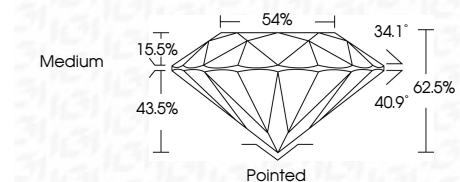
**ELECTRONIC COPY**

LG659428348  
Report verification at igi.org



February 17, 2025  
IGI Report Number **LG659428348**  
Description **LABORATORY GROWN DIAMOND**  
Shape and Cutting Style **ROUND BRILLIANT**  
Measurements **6.45 - 6.47 X 4.04 MM**

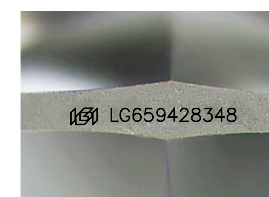
**GRADING RESULTS**  
Carat Weight **1.02 CARAT**  
Color Grade **H**  
Clarity Grade **VS 1**  
Cut Grade **IDEAL**



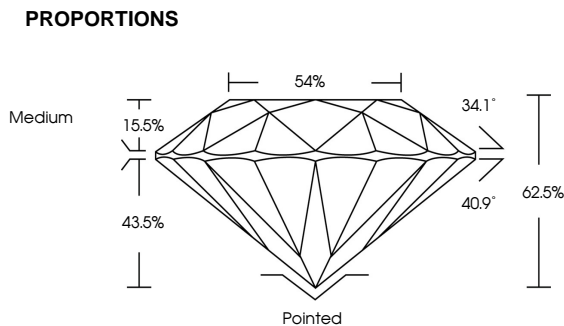
**ADDITIONAL GRADING INFORMATION**  
Polish **EXCELLENT**  
Symmetry **EXCELLENT**  
Fluorescence **NONE**  
Inscription(s) **IGI LG659428348**  
Comments: Presence of Subsurface inscription:  
Lightbox logo



February 17, 2025	IGI Report No LG659428348	1.02 CARAT	H	VS 1	IDEAL	62.5%	54%	Medium	Pointed	EXCELLENT	EXCELLENT	NONE	IGI LG659428348
IGI Report No LG659428348	ROUND BRILLIANT	6.45 - 6.47 X 4.04 MM	Color Grade	Clarity Grade	Cut Grade	Depth	Table	Girdle	Culet	Polish	Symmetry	Fluorescence	Inscription(s)
Comments: Presence of Subsurface inscription: Lightbox logo													



Sample Image Used



**COLOR**

D	E	F	G	H	I	J	Faint	Very Light	Light
---	---	---	---	---	---	---	-------	------------	-------

**CLARITY**

IF	VS <sup>1-2</sup>	VS <sup>1-2</sup>	SI <sup>1-2</sup>	I <sup>1-3</sup>
Internally Flawless	Very Very Slightly Included	Very Slightly Included	Slightly Included	Included



February 17, 2025  
IGI Report Number **LG659428348**  
Description **LABORATORY GROWN DIAMOND**  
Shape and Cutting Style **ROUND BRILLIANT**  
Measurements **6.45 - 6.47 X 4.04 MM**  
**GRADING RESULTS**  
Carat Weight **1.02 CARAT**  
Color Grade **H**  
Clarity Grade **VS 1**  
Cut Grade **IDEAL**  
**ADDITIONAL GRADING INFORMATION**  
Polish **EXCELLENT**  
Symmetry **EXCELLENT**  
Fluorescence **NONE**  
Inscription(s) **IGI LG659428348**  
Comments: Presence of Subsurface inscription: Lightbox logo