



ELECTRONIC COPY

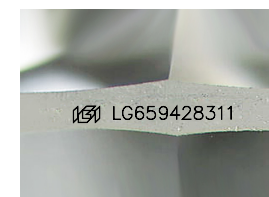
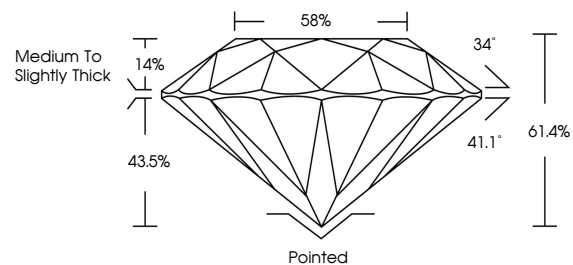
LG659428311
Report verification at igi.org



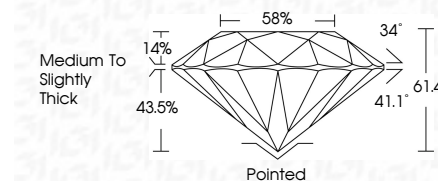
February 17, 2025
IGI Report Number **LG659428311**
Description **LABORATORY GROWN DIAMOND**
Shape and Cutting Style **ROUND BRILLIANT**
Measurements **6.49 - 6.52 X 4.00 MM**
GRADING RESULTS
Carat Weight **1.03 CARAT**
Color Grade **H**
Clarity Grade **VS 1**
Cut Grade **EXCELLENT**

February 17, 2025
IGI Report Number **LG659428311**
Description **LABORATORY GROWN DIAMOND**
Shape and Cutting Style **ROUND BRILLIANT**
Measurements **6.49 - 6.52 X 4.00 MM**
GRADING RESULTS
Carat Weight **1.03 CARAT**
Color Grade **H**
Clarity Grade **VS 1**
Cut Grade **EXCELLENT**

PROPORTIONS



Sample Image Used



ADDITIONAL GRADING INFORMATION
Polish **EXCELLENT**
Symmetry **EXCELLENT**
Fluorescence **NONE**
Inscription(s) **IGI LG659428311**
Comments: Presence of Subsurface inscription: Lightbox logo

COLOR

D E F G H I J Faint Very Light Light

CLARITY

IF VS¹⁻² VS¹⁻² SI¹⁻² I¹⁻³
Internally Flawless Very Very Slightly Included Very Slightly Included Slightly Included Included

ADDITIONAL GRADING INFORMATION

Polish **EXCELLENT**
Symmetry **EXCELLENT**
Fluorescence **NONE**
Inscription(s) **IGI LG659428311**
Comments: Presence of Subsurface inscription: Lightbox logo



February 17, 2025
IGI Report No **LG659428311**
ROUND BRILLIANT
Carat Weight **1.03 CARAT**
Color Grade **H**
Clarity Grade **VS 1**
Depth **EXCELLENT**
Table **61.4%**
Girdle **68%**
Medium To Slightly Thick
Culet **Pointed**
Polish **EXCELLENT**
Symmetry **EXCELLENT**
Fluorescence **NONE**
Inscription(s) **IGI LG659428311**
Comments: Presence of Subsurface inscription: Lightbox logo