



ELECTRONIC COPY

LG659428310
Report verification at igi.org



February 17, 2025

IGI Report Number **LG659428310**

Description **LABORATORY GROWN DIAMOND**

Shape and Cutting Style **ROUND BRILLIANT**

Measurements **6.43 - 6.46 X 4.00 MM**

GRADING RESULTS

Carat Weight **1.00 CARAT**

Color Grade **H**

Clarity Grade **VVS 2**

Cut Grade **IDEAL**

February 17, 2025

IGI Report Number **LG659428310**

Description **LABORATORY GROWN DIAMOND**

Shape and Cutting Style **ROUND BRILLIANT**

Measurements **6.43 - 6.46 X 4.00 MM**

GRADING RESULTS

Carat Weight **1.00 CARAT**

Color Grade **H**

Clarity Grade **VVS 2**

Cut Grade **IDEAL**

ADDITIONAL GRADING INFORMATION

Polish **EXCELLENT**

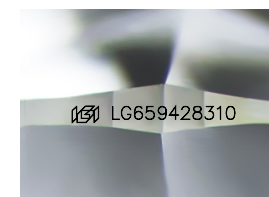
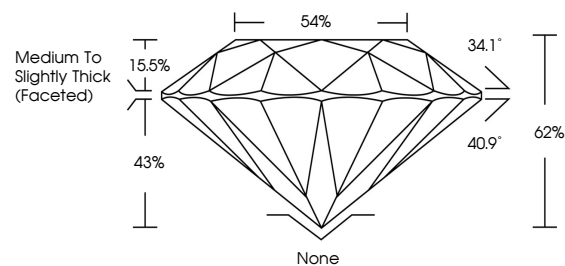
Symmetry **EXCELLENT**

Fluorescence **NONE**

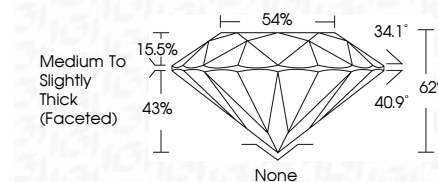
Inscription(s) **LG659428310**

Comments: Presence of Subsurface inscription: Lightbox logo

PROPORTIONS



Sample Image Used



COLOR

D E F G H I J Faint Very Light Light

CLARITY

IF WS¹⁻² VS¹⁻² SI¹⁻² I¹⁻³

Internally Flawless Very Very Slightly Included Very Slightly Included Slightly Included Included

ADDITIONAL GRADING INFORMATION

Polish **EXCELLENT**

Symmetry **EXCELLENT**

Fluorescence **NONE**

Inscription(s) **LG659428310**

Comments: Presence of Subsurface inscription: Lightbox logo



IGI



February 17, 2025	1.00 CARAT	H	VVS 2	IDEAL	62%	54%	Medium To Slightly Thick (Faceted)	None	EXCELLENT	EXCELLENT	NONE	LG659428310
IGI Report No LG659428310	Carat Weight	Color Grade	Clarity Grade	Cut Grade	Depth	Table	Grade	Culet	Polish	Symmetry	Fluorescence	Inscription(s)
ROUND BRILLIANT	6.43 - 6.46 X 4.00 MM	H	VVS 2	IDEAL	62%	54%	Medium To Slightly Thick (Faceted)	None	EXCELLENT	EXCELLENT	NONE	LG659428310

Comments: Presence of Subsurface inscription: Lightbox logo