



**ELECTRONIC COPY**

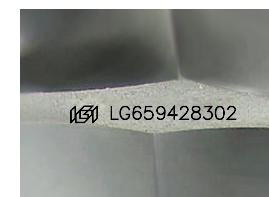
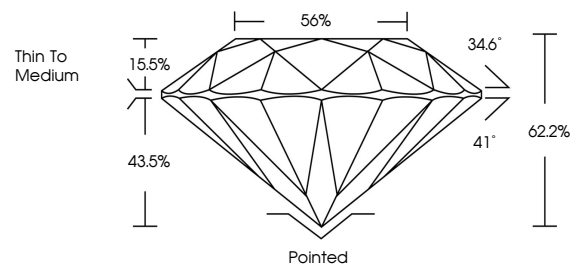
LG659428302  
Report verification at igi.org



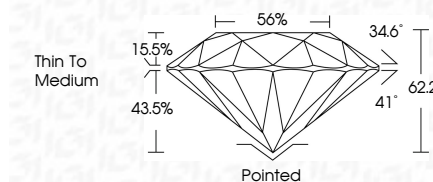
February 17, 2025  
IGI Report Number **LG659428302**  
Description **LABORATORY GROWN DIAMOND**  
Shape and Cutting Style **ROUND BRILLIANT**  
Measurements **6.50 - 6.51 X 4.05 MM**  
**GRADING RESULTS**  
Carat Weight **1.04 CARAT**  
Color Grade **F**  
Clarity Grade **VVS 2**  
Cut Grade **IDEAL**

February 17, 2025  
IGI Report Number **LG659428302**  
Description **LABORATORY GROWN DIAMOND**  
Shape and Cutting Style **ROUND BRILLIANT**  
Measurements **6.50 - 6.51 X 4.05 MM**  
**GRADING RESULTS**  
Carat Weight **1.04 CARAT**  
Color Grade **F**  
Clarity Grade **VVS 2**  
Cut Grade **IDEAL**

**PROPORTIONS**



Sample Image Used



**ADDITIONAL GRADING INFORMATION**  
Polish **EXCELLENT**  
Symmetry **EXCELLENT**  
Fluorescence **NONE**  
Inscription(s) **IGI LG659428302**  
Comments: Presence of Subsurface inscription: Lightbox logo

**COLOR**

D E F G H I J Faint Very Light Light

**CLARITY**

IF VS<sup>1-2</sup> VS<sup>1-2</sup> SI<sup>1-2</sup> I<sup>1-3</sup>  
Internally Flawless Very Very Slightly Included Very Slightly Included Slightly Included Included

**ADDITIONAL GRADING INFORMATION**

Polish **EXCELLENT**  
Symmetry **EXCELLENT**  
Fluorescence **NONE**  
Inscription(s) **IGI LG659428302**  
Comments: Presence of Subsurface inscription: Lightbox logo



February 17, 2025  
IGI Report No LG659428302  
**ROUND BRILLIANT**  
6.50 - 6.51 X 4.05 MM  
1.04 CARAT  
F  
VVS 2  
IDEAL  
62.2%  
56%  
Thin To Medium  
Pointed  
EXCELLENT  
EXCELLENT  
NONE  
IGI LG659428302  
Comments: Presence of Subsurface inscription: Lightbox logo