



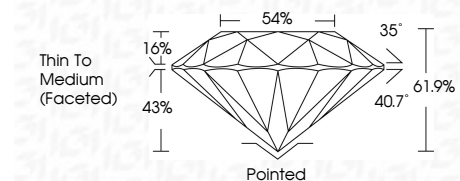
**ELECTRONIC COPY**

LG659428295  
Report verification at [igi.org](http://igi.org)



February 17, 2025  
IGI Report Number **LG659428295**  
Description **LABORATORY GROWN DIAMOND**  
Shape and Cutting Style **ROUND BRILLIANT**  
Measurements **6.44 - 6.53 X 4.02 MM**

**GRADING RESULTS**  
Carat Weight **1.02 CARAT**  
Color Grade **H**  
Clarity Grade **VS 1**  
Cut Grade **IDEAL**

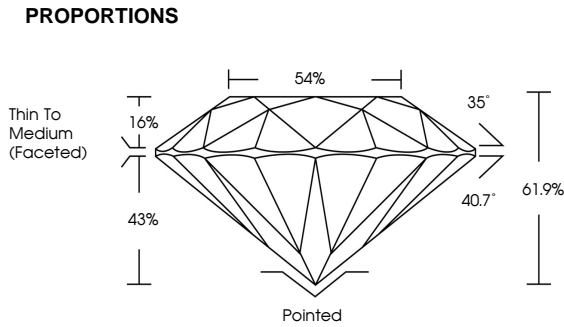


**ADDITIONAL GRADING INFORMATION**  
Polish **EXCELLENT**  
Symmetry **EXCELLENT**  
Fluorescence **NONE**  
Inscription(s) **IGI LG659428295**  
Comments: Presence of Subsurface inscription:  
Lightbox logo

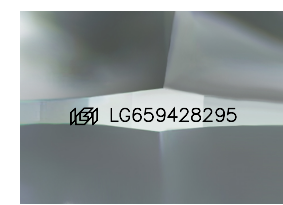


February 17, 2025	IGI Report No LG659428295	1.02 CARAT	H
ROUND BRILLIANT	6.44 - 6.53 X 4.02 MM	VS 1	IDEAL
Color Grade	Clarity Grade	Depth	Table
		61.9%	54%
		Thin To Medium (Faceted)	
Culet	Polish	Symmetry	Fluorescence
	EXCELLENT	EXCELLENT	NONE
Inscription(s)	IGI LG659428295		
Comments: Presence of Subsurface inscription: Lightbox logo			

February 17, 2025  
IGI Report Number **LG659428295**  
Description **LABORATORY GROWN DIAMOND**  
Shape and Cutting Style **ROUND BRILLIANT**  
Measurements **6.44 - 6.53 X 4.02 MM**  
**GRADING RESULTS**  
Carat Weight **1.02 CARAT**  
Color Grade **H**  
Clarity Grade **VS 1**  
Cut Grade **IDEAL**



**ADDITIONAL GRADING INFORMATION**  
Polish **EXCELLENT**  
Symmetry **EXCELLENT**  
Fluorescence **NONE**  
Inscription(s) **IGI LG659428295**  
Comments: Presence of Subsurface inscription: Lightbox logo



Sample Image Used

**COLOR**

D	E	F	G	H	I	J	Faint	Very Light	Light
---	---	---	---	---	---	---	-------	------------	-------

**CLARITY**

IF	VS <sup>1-2</sup>	VS <sup>1-2</sup>	SI <sup>1-2</sup>	I <sup>1-3</sup>
Internally Flawless	Very Very Slightly Included	Very Slightly Included	Slightly Included	Included

