



ELECTRONIC COPY

LG659428271
Report verification at igi.org



February 17, 2025

IGI Report Number **LG659428271**

Description **LABORATORY GROWN DIAMOND**

Shape and Cutting Style **ROUND BRILLIANT**

Measurements **6.43 - 6.46 X 4.02 MM**

GRADING RESULTS

Carat Weight **1.03 CARAT**

Color Grade **G**

Clarity Grade **VVS 1**

Cut Grade **IDEAL**

February 17, 2025

IGI Report Number **LG659428271**

Description **LABORATORY GROWN DIAMOND**

Shape and Cutting Style **ROUND BRILLIANT**

Measurements **6.43 - 6.46 X 4.02 MM**

GRADING RESULTS

Carat Weight **1.03 CARAT**

Color Grade **G**

Clarity Grade **VVS 1**

Cut Grade **IDEAL**

ADDITIONAL GRADING INFORMATION

Polish **EXCELLENT**

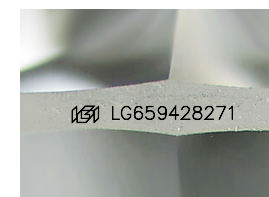
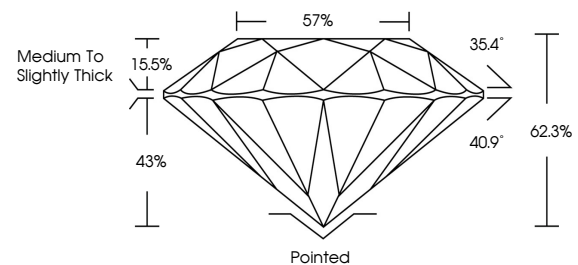
Symmetry **EXCELLENT**

Fluorescence **NONE**

Inscription(s) **IGI LG659428271**

Comments: Presence of Subsurface inscription: Lightbox logo

PROPORTIONS



Sample Image Used

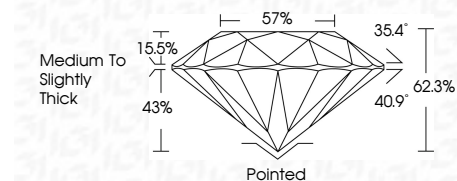
COLOR

D E F G H I J Faint Very Light Light

CLARITY

IF WS¹⁻² VS¹⁻² SI¹⁻² I¹⁻³

Internally Flawless Very Very Slightly Included Very Slightly Included Slightly Included Included



ADDITIONAL GRADING INFORMATION

Polish **EXCELLENT**

Symmetry **EXCELLENT**

Fluorescence **NONE**

Inscription(s) **IGI LG659428271**

Comments: Presence of Subsurface inscription: Lightbox logo



IGI



February 17, 2025	IGI Report No LG659428271	1.03 CARAT	G	VVS 1	IDEAL	62.3%	57%	Medium To Slightly Thick	Pointed	EXCELLENT	EXCELLENT	NONE	IGI LG659428271	Presence of Subsurface inscription: Lightbox logo
IGI Report No LG659428271	ROUND BRILLIANT	6.43 - 6.46 X 4.02 MM	Color Grade	Clarity Grade	Cut Grade	Depth	Table	Grade	Culet	Polish	Symmetry	Fluorescence	Inscription(s)	Comments: