



ELECTRONIC COPY

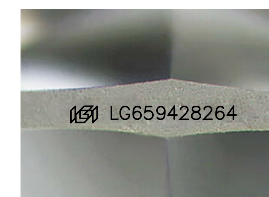
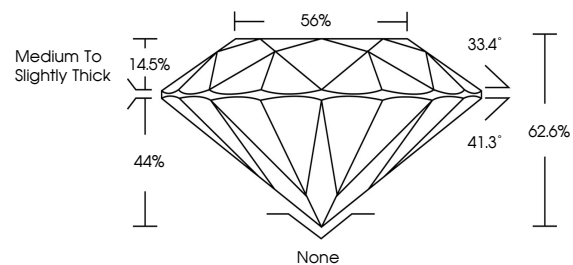
LG659428264
Report verification at igi.org



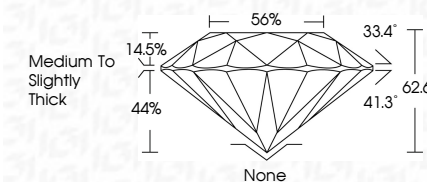
February 17, 2025
IGI Report Number **LG659428264**
Description **LABORATORY GROWN DIAMOND**
Shape and Cutting Style **ROUND BRILLIANT**
Measurements **6.36 - 6.39 X 4.00 MM**
GRADING RESULTS
Carat Weight **1.00 CARAT**
Color Grade **G**
Clarity Grade **VVS 2**
Cut Grade **EXCELLENT**

February 17, 2025
IGI Report Number **LG659428264**
Description **LABORATORY GROWN DIAMOND**
Shape and Cutting Style **ROUND BRILLIANT**
Measurements **6.36 - 6.39 X 4.00 MM**
GRADING RESULTS
Carat Weight **1.00 CARAT**
Color Grade **G**
Clarity Grade **VVS 2**
Cut Grade **EXCELLENT**

PROPORTIONS



Sample Image Used



ADDITIONAL GRADING INFORMATION
Polish **EXCELLENT**
Symmetry **EXCELLENT**
Fluorescence **NONE**
Inscription(s) **IGI LG659428264**
Comments: Presence of Subsurface inscription: Lightbox logo

COLOR

D E F G H I J Faint Very Light Light

CLARITY

IF VS¹⁻² VS¹⁻² SI¹⁻² I¹⁻³
Internally Flawless Very Very Slightly Included Very Slightly Included Slightly Included Included

ADDITIONAL GRADING INFORMATION

Polish **EXCELLENT**
Symmetry **EXCELLENT**
Fluorescence **NONE**
Inscription(s) **IGI LG659428264**
Comments: Presence of Subsurface inscription: Lightbox logo



IGI

February 17, 2025
IGI Report No LG659428264
ROUND BRILLIANT
6.36 - 6.39 X 4.00 MM
1.00 CARAT
Color Grade **G**
Clarity Grade **VVS 2**
Depth **EXCELLENT**
Table **62.6%**
Girdle **56%**
Medium To Slightly Thick
Culet **None**
Polish **EXCELLENT**
Symmetry **EXCELLENT**
Fluorescence **NONE**
Inscription(s) **IGI LG659428264**
Comments: Presence of Subsurface inscription: Lightbox logo