



ELECTRONIC COPY

LG659428251
Report verification at igi.org



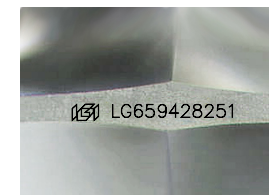
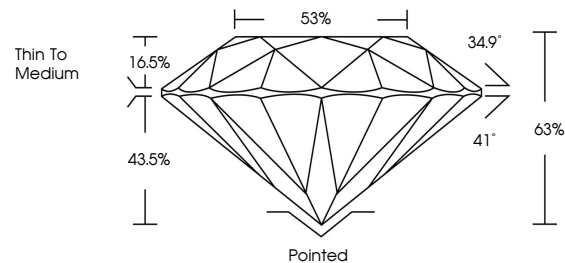
February 17, 2025
IGI Report Number **LG659428251**
Description **LABORATORY GROWN DIAMOND**
Shape and Cutting Style **ROUND BRILLIANT**
Measurements **6.45 - 6.46 X 4.07 MM**
GRADING RESULTS
Carat Weight **1.02 CARAT**
Color Grade **H**
Clarity Grade **VS 1**
Cut Grade **EXCELLENT**

February 17, 2025
IGI Report Number **LG659428251**
Description **LABORATORY GROWN DIAMOND**
Shape and Cutting Style **ROUND BRILLIANT**
Measurements **6.45 - 6.46 X 4.07 MM**
GRADING RESULTS
Carat Weight **1.02 CARAT**
Color Grade **H**
Clarity Grade **VS 1**
Cut Grade **EXCELLENT**

ADDITIONAL GRADING INFORMATION

Polish **EXCELLENT**
Symmetry **VERY GOOD**
Fluorescence **NONE**
Inscription(s) **IGI LG659428251**
Comments: Presence of Subsurface inscription: Lightbox logo

PROPORTIONS



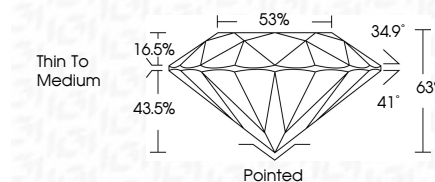
Sample Image Used

COLOR

D E F G H I J Faint Very Light Light

CLARITY

IF	WS ¹⁻²	VS ¹⁻²	SI ¹⁻²	I ¹⁻³
Internally Flawless	Very Very Slightly Included	Very Slightly Included	Slightly Included	Included



ADDITIONAL GRADING INFORMATION

Polish **EXCELLENT**
Symmetry **VERY GOOD**
Fluorescence **NONE**
Inscription(s) **IGI LG659428251**
Comments: Presence of Subsurface inscription: Lightbox logo



IGI



February 17, 2025	1.02 CARAT	H	VS 1	EXCELLENT	63%	88%	Thin To Medium	Pointed	EXCELLENT	VERY GOOD	NONE	IGI LG659428251
IGI Report No LG659428251	6.45 - 6.46 X 4.07 MM	ROUND BRILLIANT	Color Grade	Clarity Grade	Depth	Table	Girdle	Culet	Polish	Symmetry	Fluorescence	Inscription(s)
Comments: Presence of Subsurface inscription: Lightbox logo												