



ELECTRONIC COPY

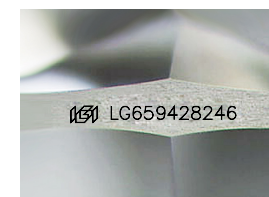
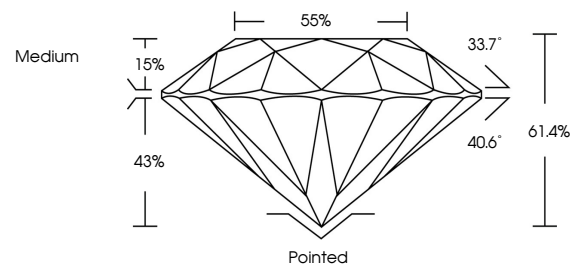
LG659428246
Report verification at igi.org



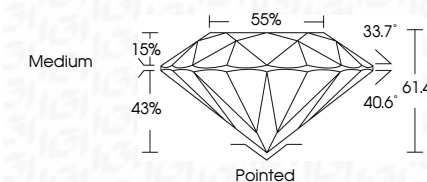
February 17, 2025
IGI Report Number **LG659428246**
Description **LABORATORY GROWN DIAMOND**
Shape and Cutting Style **ROUND BRILLIANT**
Measurements **6.51 - 6.53 X 4.01 MM**
GRADING RESULTS
Carat Weight **1.03 CARAT**
Color Grade **G**
Clarity Grade **VVS 2**
Cut Grade **EXCELLENT**

February 17, 2025
IGI Report Number **LG659428246**
Description **LABORATORY GROWN DIAMOND**
Shape and Cutting Style **ROUND BRILLIANT**
Measurements **6.51 - 6.53 X 4.01 MM**
GRADING RESULTS
Carat Weight **1.03 CARAT**
Color Grade **G**
Clarity Grade **VVS 2**
Cut Grade **EXCELLENT**

PROPORTIONS



Sample Image Used



ADDITIONAL GRADING INFORMATION
Polish **EXCELLENT**
Symmetry **VERY GOOD**
Fluorescence **NONE**
Inscription(s) **IGI LG659428246**
Comments: Presence of Subsurface inscription: Lightbox logo

COLOR

D E F G H I J Faint Very Light Light

CLARITY

IF	VS ¹⁻²	VS ¹⁻²	SI ¹⁻²	I ¹⁻³
Internally Flawless	Very Very Slightly Included	Very Slightly Included	Slightly Included	Included

ADDITIONAL GRADING INFORMATION

Polish **EXCELLENT**
Symmetry **VERY GOOD**
Fluorescence **NONE**
Inscription(s) **IGI LG659428246**
Comments: Presence of Subsurface inscription: Lightbox logo



IGI

February 17, 2025
IGI Report No **LG659428246**
ROUND BRILLIANT
6.51 - 6.53 X 4.01 MM
Carat Weight **1.03 CARAT**
Color Grade **G**
Clarity Grade **VVS 2**
Depth **EXCELLENT**
Table **61.4%**
Girdle **55%**
Medium
Culet **Pointed**
Polish **EXCELLENT**
Symmetry **VERY GOOD**
Fluorescence **NONE**
Inscription(s) **IGI LG659428246**
Comments: Presence of Subsurface inscription: Lightbox logo