



ELECTRONIC COPY

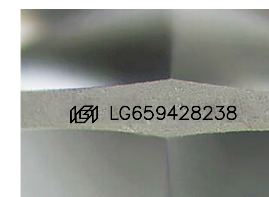
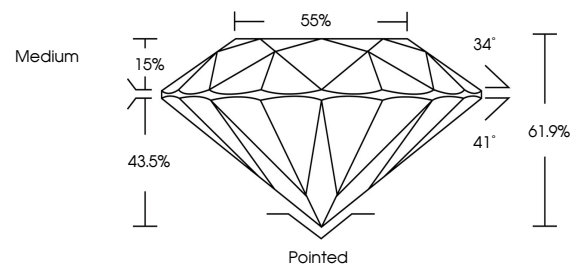
LG659428238
Report verification at igi.org



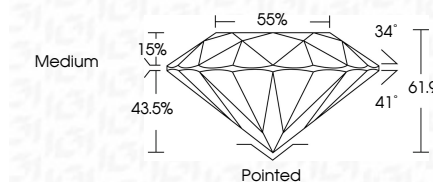
February 17, 2025
IGI Report Number **LG659428238**
Description **LABORATORY GROWN DIAMOND**
Shape and Cutting Style **ROUND BRILLIANT**
Measurements **6.50 - 6.53 X 4.04 MM**
GRADING RESULTS
Carat Weight **1.04 CARAT**
Color Grade **G**
Clarity Grade **VVS 1**
Cut Grade **IDEAL**

February 17, 2025
IGI Report Number **LG659428238**
Description **LABORATORY GROWN DIAMOND**
Shape and Cutting Style **ROUND BRILLIANT**
Measurements **6.50 - 6.53 X 4.04 MM**
GRADING RESULTS
Carat Weight **1.04 CARAT**
Color Grade **G**
Clarity Grade **VVS 1**
Cut Grade **IDEAL**

PROPORTIONS



Sample Image Used



ADDITIONAL GRADING INFORMATION
Polish **EXCELLENT**
Symmetry **EXCELLENT**
Fluorescence **NONE**
Inscription(s) **IGI LG659428238**
Comments: Presence of Subsurface inscription: Lightbox logo

COLOR

D E F G H I J Faint Very Light Light

CLARITY

IF WS¹⁻² VS¹⁻² SI¹⁻² I¹⁻³
Internally Flawless Very Very Slightly Included Very Slightly Included Slightly Included Included

ADDITIONAL GRADING INFORMATION

Polish **EXCELLENT**
Symmetry **EXCELLENT**
Fluorescence **NONE**
Inscription(s) **IGI LG659428238**
Comments: Presence of Subsurface inscription: Lightbox logo



February 17, 2025	1.04 CARAT	G	Pointed
IGI Report No LG659428238	EXCELLENT	EXCELLENT	EXCELLENT
ROUND BRILLIANT	VVS 1	IDEAL	NONE
6.50 - 6.53 X 4.04 MM	61.9%	55%	Medium
Carat Weight	1.04 CARAT		
Color Grade	G		
Clarity Grade	VVS 1		
Cut Grade	IDEAL		
Depth	61.9%		
Table	15%		
Girdle	Medium		
Culet	Pointed		
Polish	EXCELLENT		
Symmetry	EXCELLENT		
Fluorescence	NONE		
Inscription(s)	IGI LG659428238		
Comments: Presence of Subsurface inscription: Lightbox logo			