



**ELECTRONIC COPY**

LG659428208  
Report verification at igi.org



February 17, 2025  
IGI Report Number **LG659428208**  
Description **LABORATORY GROWN DIAMOND**  
Shape and Cutting Style **ROUND BRILLIANT**  
Measurements **6.45 - 6.49 X 4.06 MM**

**GRADING RESULTS**

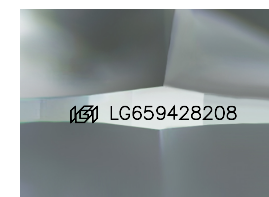
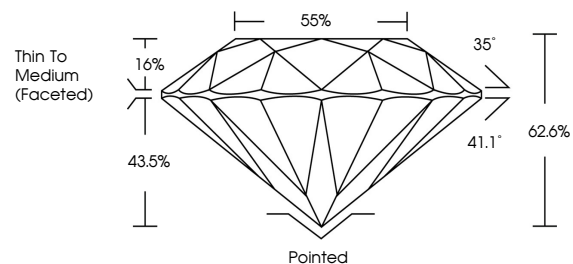
Carat Weight **1.03 CARAT**  
Color Grade **H**  
Clarity Grade **VVS 2**  
Cut Grade **EXCELLENT**

February 17, 2025  
IGI Report Number **LG659428208**  
Description **LABORATORY GROWN DIAMOND**  
Shape and Cutting Style **ROUND BRILLIANT**  
Measurements **6.45 - 6.49 X 4.06 MM**  
**GRADING RESULTS**  
Carat Weight **1.03 CARAT**  
Color Grade **H**  
Clarity Grade **VVS 2**  
Cut Grade **EXCELLENT**

**ADDITIONAL GRADING INFORMATION**

Polish **EXCELLENT**  
Symmetry **EXCELLENT**  
Fluorescence **NONE**  
Inscription(s) **IGI LG659428208**  
Comments: Presence of Subsurface inscription: Lightbox logo

**PROPORTIONS**



Sample Image Used

**COLOR**

D E F G H I J Faint Very Light Light

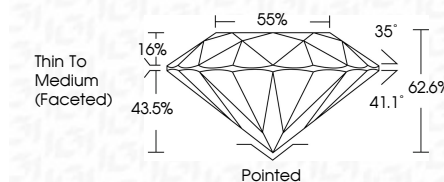
**CLARITY**

IF VS<sup>1-2</sup> VS<sup>1-2</sup> SI<sup>1-2</sup> I<sup>1-3</sup>

Internally Flawless Very Very Slightly Included Very Slightly Included Slightly Included Included

**ADDITIONAL GRADING INFORMATION**

Polish **EXCELLENT**  
Symmetry **EXCELLENT**  
Fluorescence **NONE**  
Inscription(s) **IGI LG659428208**  
Comments: Presence of Subsurface inscription: Lightbox logo



**IGI**



February 17, 2025	1.03 CARAT	H	VVS 2	62.6%	85%	Pointed	EXCELLENT	EXCELLENT	NONE	IGI LG659428208	
IGI Report No LG659428208	6.45 - 6.49 X 4.06 MM	ROUND BRILLIANT	EXCELLENT	EXCELLENT	EXCELLENT	None	EXCELLENT	EXCELLENT	NONE	IGI LG659428208	
Carat Weight	Color Grade	Clarity Grade	Cut Grade	Depth	Table	Girdle	Thin To Medium (Faceted)	Polish	Symmetry	Fluorescence	
1.03 CARAT	H	VVS 2	EXCELLENT	62.6%	85%	Pointed	EXCELLENT	EXCELLENT	EXCELLENT	NONE	IGI LG659428208
Comments: Presence of Subsurface inscription: Lightbox logo											