



**ELECTRONIC COPY**

LG659428176  
Report verification at igi.org



February 17, 2025

IGI Report Number **LG659428176**

Description **LABORATORY GROWN DIAMOND**

Shape and Cutting Style **ROUND BRILLIANT**

Measurements **6.39 - 6.40 X 4.02 MM**

**GRADING RESULTS**

Carat Weight **1.00 CARAT**

Color Grade **H**

Clarity Grade **VVS 2**

Cut Grade **EXCELLENT**

February 17, 2025

IGI Report Number **LG659428176**

Description **LABORATORY GROWN DIAMOND**

Shape and Cutting Style **ROUND BRILLIANT**

Measurements **6.39 - 6.40 X 4.02 MM**

**GRADING RESULTS**

Carat Weight **1.00 CARAT**

Color Grade **H**

Clarity Grade **VVS 2**

Cut Grade **EXCELLENT**

**ADDITIONAL GRADING INFORMATION**

Polish **EXCELLENT**

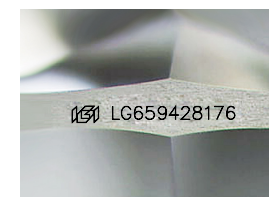
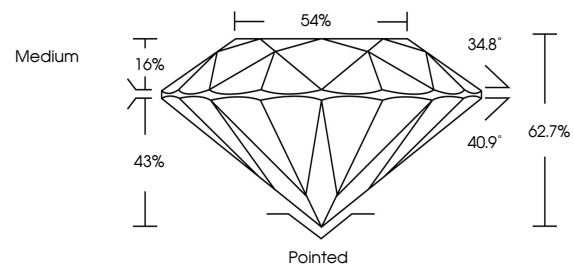
Symmetry **EXCELLENT**

Fluorescence **NONE**

Inscription(s) **LG659428176**

Comments: Presence of Subsurface inscription: Lightbox logo

**PROPORTIONS**



Sample Image Used

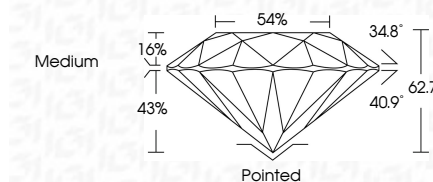
**COLOR**

D E F G H I J Faint Very Light Light

**CLARITY**

IF WS<sup>1-2</sup> VS<sup>1-2</sup> SI<sup>1-2</sup> I<sup>1-3</sup>

Internally Flawless Very Very Slightly Included Very Slightly Included Slightly Included Included



**ADDITIONAL GRADING INFORMATION**

Polish **EXCELLENT**

Symmetry **EXCELLENT**

Fluorescence **NONE**

Inscription(s) **LG659428176**

Comments: Presence of Subsurface inscription: Lightbox logo



**IGI**



February 17, 2025	1.00 CARAT	H	EXCELLENT	62.7%	54%	Medium	Pointed	EXCELLENT	EXCELLENT	NONE	LG659428176	Comments: Presence of Subsurface inscription: Lightbox logo
IGI Report No LG659428176	6.39 - 6.40 X 4.02 MM	ROUND BRILLIANT	Color Grade	Clarity Grade	Depth	Table	Girdle	Culet	Polish	Symmetry	Fluorescence	Inscription(s)