



ELECTRONIC COPY

LABORATORY GROWN DIAMOND REPORT

October 17, 2024	
IGI Report Number	LG659414060
Description	LABORATORY GROWN DIAMOND
Shape and Cutting Style	CUT CORNERED RECTANGULAR MODIFIED BRILLIANT
Measurements	7.60 X 4.76 X 3.03 MM

GRADING RESULTS

Carat Weight	1.01 CARAT
Color Grade	FANCY PINK
Clarity Grade	VVS 2

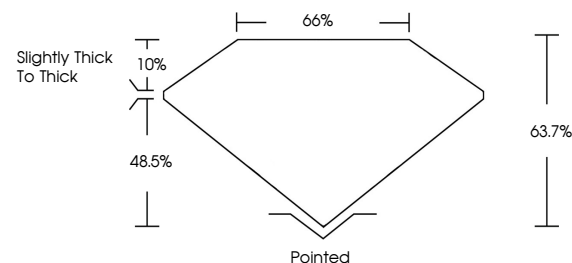
ADDITIONAL GRADING INFORMATION

Polish	EXCELLENT
Symmetry	VERY GOOD
Fluorescence	SLIGHT
Inscription(s)	 LG659414060

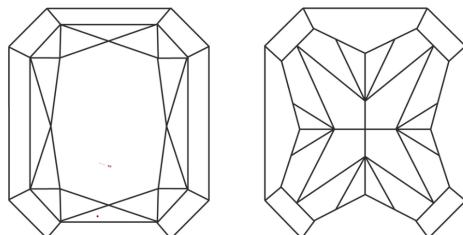
Comments: This Laboratory Grown Diamond was created by Chemical Vapor Deposition (CVD) growth process.
Indications of post-growth treatment.

LG659414060
Report verification at lgi.org

PROPORTIONS

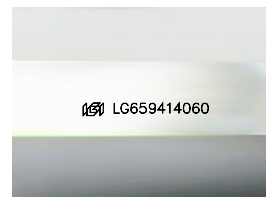


CLARITY CHARACTERISTICS



KEY TO SYMBOLS

Red symbols indicate internal characteristics.
Green symbols indicate external characteristics.



Sample Image Used

COLOR

D E F G H I J Faint Very Light Light

CLARITY

IF	VVS ¹⁻²	VS ¹⁻²	SI ¹⁻²	I ¹⁻³
Internally Flawless	Very Very Slightly Included	Very Slightly Included	Slightly Included	Included



© IGI 2020, International Gemological Institute

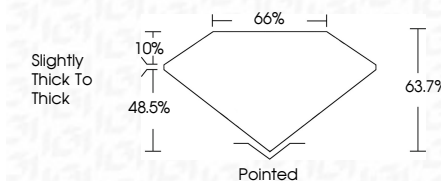
FD - 10 20

www.igi.org

LABORATORY GROWN DIAMOND REPORT



October 17, 2024	
IGI Report Number	LG659414060
Description	LABORATORY GROWN DIAMOND
Shape and Cutting Style	CUT CORNERED RECTANGULAR MODIFIED BRILLIANT
Measurements	7.60 X 4.76 X 3.03 MM
GRADING RESULTS	
Carat Weight	1.01 CARAT
Color Grade	FANCY PINK
Clarity Grade	VVS 2



ADDITIONAL GRADING INFORMATION

Polish	EXCELLENT
Symmetry	VERY GOOD
Fluorescence	SLIGHT
Inscription(s)	 LG-659414060

Comments: This Laboratory Grown Diamond was created by Chemical Vapor Deposition (CVD) growth process.
Indications of post-growth treatment.



October 17, 2024	GI Report No. LG559414060
CUT CORNERED RECT. MODIFIED BRILLIANT	
1.60 X 4.75 X 3.03 MM	1.01 CARAT
Color Weight	FANCY PINK
Color Grade	VVS 2
Clarity Grade	63.7%
Depth	66%
Table	Slightly thick to thick
Girdle	Pointed
Symmetry	EXCELLENT
Fluorescence	VERY GOOD
Inscriptions(s)	SLIGHT
	689 LG559414060

Comments:

This Fancy Gray Group Diamond was created by Chemical Vapor Deposition (CVD) growth process.

Indications of post-growth treatment.