



**ELECTRONIC COPY**

LG658492652  
Report verification at igi.org



October 9, 2024

IGI Report Number **LG658492652**

Description **LABORATORY GROWN DIAMOND**

Shape and Cutting Style **CUSHION BRILLIANT**

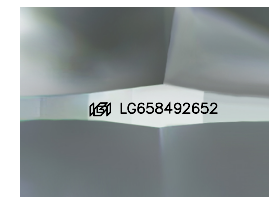
Measurements **7.10 X 5.26 X 3.59 MM**

**GRADING RESULTS**

Carat Weight **1.04 CARAT**

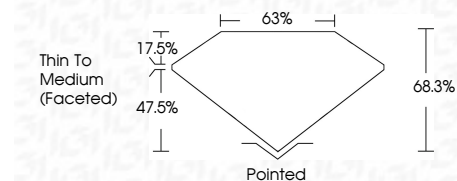
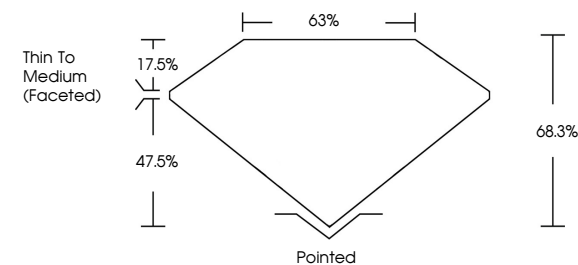
Color Grade **D**

Clarity Grade **VVS 1**

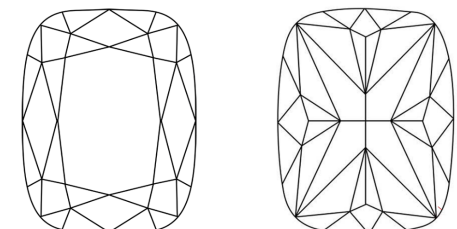


Sample Image Used

**PROPORTIONS**



**CLARITY CHARACTERISTICS**



**KEY TO SYMBOLS**

Red symbols indicate internal characteristics.  
Green symbols indicate external characteristics.

**COLOR**

D	E	F	G	H	I	J	Faint	Very Light	Light
---	---	---	---	---	---	---	-------	------------	-------

**CLARITY**

IF	VS <sup>1-2</sup>	VS <sup>1-2</sup>	SI <sup>1-2</sup>	I <sup>1-3</sup>
Internally Flawless	Very Very Slightly Included	Very Slightly Included	Slightly Included	Included

**ADDITIONAL GRADING INFORMATION**

Polish **EXCELLENT**

Symmetry **EXCELLENT**

Fluorescence **NONE**

Inscription(s) **IGI LG658492652**

Comments: This Laboratory Grown Diamond was created by Chemical Vapor Deposition (CVD) growth process. Type IIa



**IGI**



October 9, 2024  
IGI Report No LG658492652  
CUSHION BRILLIANT

1.04 CARAT  
D

7.10 X 5.26 X 3.59 MM  
Color Grade  
Clarity Grade  
Depth  
Table  
Girdle  
Thin To Medium (Faceted)  
Pointed  
Polish  
Symmetry  
Fluorescence  
Inscription(s)

VVS 1  
68.3%  
63%  
EXCELLENT  
EXCELLENT  
NONE  
IGI LG658492652

Comments: This Laboratory Grown Diamond was created by Chemical Vapor Deposition (CVD) growth process. Type IIa