



ELECTRONIC COPY

LG658487267
Report verification at igi.org



October 10, 2024

IGI Report Number **LG658487267**

Description **LABORATORY GROWN DIAMOND**

Shape and Cutting Style **EMERALD CUT**

Measurements **11.88 X 7.87 X 5.28 MM**

GRADING RESULTS

Carat Weight **5.51 CARATS**

Color Grade **F**

Clarity Grade **VVS 2**

October 10, 2024

IGI Report Number **LG658487267**

Description **LABORATORY GROWN DIAMOND**

Shape and Cutting Style **EMERALD CUT**

Measurements **11.88 X 7.87 X 5.28 MM**

GRADING RESULTS

Carat Weight **5.51 CARATS**

Color Grade **F**

Clarity Grade **VVS 2**

ADDITIONAL GRADING INFORMATION

Polish **EXCELLENT**

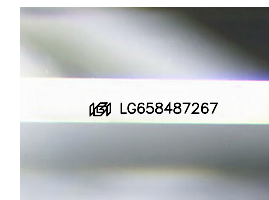
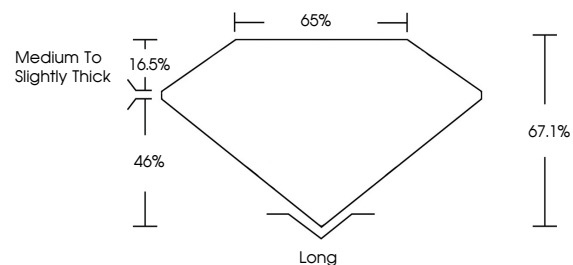
Symmetry **EXCELLENT**

Fluorescence **NONE**

Inscription(s) **IGI LG658487267**

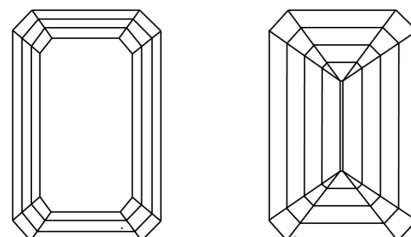
Comments: This Laboratory Grown Diamond was created by Chemical Vapor Deposition (CVD) growth process. Type IIa

PROPORTIONS



Sample Image Used

CLARITY CHARACTERISTICS



KEY TO SYMBOLS

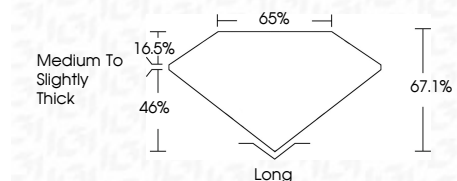
Red symbols indicate internal characteristics.
Green symbols indicate external characteristics.

COLOR

D E F G H I J Faint Very Light Light

CLARITY

| | | | | |
|---------------------|-----------------------------|------------------------|-------------------|------------------|
| IF | VS ¹⁻² | VS ¹⁻² | SI ¹⁻² | I ¹⁻³ |
| Internally Flawless | Very Very Slightly Included | Very Slightly Included | Slightly Included | Included |



ADDITIONAL GRADING INFORMATION

Polish **EXCELLENT**

Symmetry **EXCELLENT**

Fluorescence **NONE**

Inscription(s) **IGI LG658487267**

Comments: This Laboratory Grown Diamond was created by Chemical Vapor Deposition (CVD) growth process. Type IIa



IGI

October 10, 2024
IGI Report No. LG658487267
EMERALD CUT

11.88 X 7.87 X 5.28 MM

5.51 CARATS
F

VVS 2
67.1%
65%

Medium to Slightly Thick

Long
EXCELLENT
EXCELLENT
NONE
IGI LG658487267

Comments: This Laboratory Grown Diamond was created by Chemical Vapor Deposition (CVD) growth process. Type IIa

