



**ELECTRONIC COPY**

## LABORATORY GROWN DIAMOND REPORT

October 10, 2024	
IGI Report Number	LG658485045
Description	LABORATORY GROWN DIAMOND
Shape and Cutting Style	PRINCESS CUT
Measurements	8.54 X 8.36 X 6.03 MM

## GRADING RESULTS

Carat Weight	3.82 CARATS
Color Grade	F
Clarity Grade	VVS 2

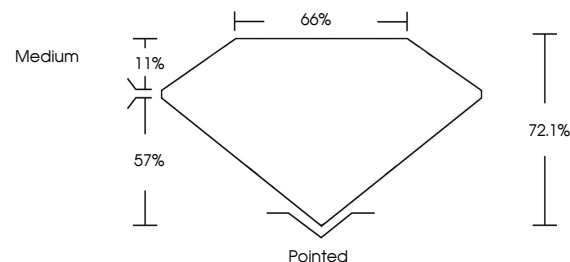
### ADDITIONAL GRADING INFORMATION

Polish	EXCELLENT
Symmetry	EXCELLENT
Fluorescence	NONE
Inscription(s)	15 LG658485045

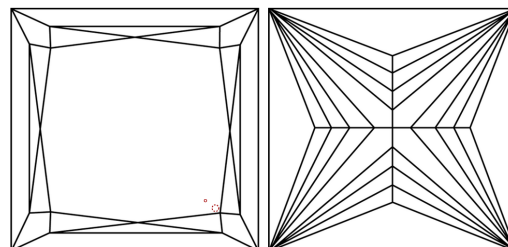
Comments: This Laboratory Grown Diamond was created by Chemical Vapor Deposition (CVD) growth process.  
Type IIa

LG658485045  
Report verification at [lgi.org](https://lgi.org)

## PROPORTIONS

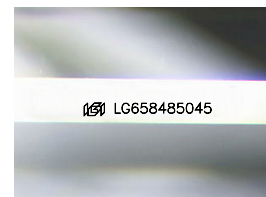


## CLARITY CHARACTERISTICS



### KEY TO SYMBOLS

Red symbols indicate internal characteristics.  
Green symbols indicate external characteristics.



Sample Image Used

## COLOR

D E F G H I J Faint Very Light Light

## CLARITY

IF	VVS <sup>1,2</sup>	VS <sup>1,2</sup>	SI <sup>1,2</sup>	I <sup>1,3</sup>
Internally Flawless	Very Very Slightly Included	Very Slightly Included	Slightly Included	Included



© IGI 2020, International Gemological Institute

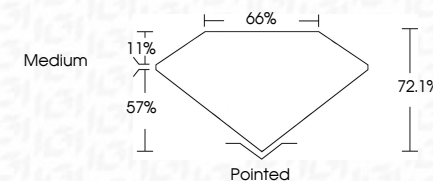
FD - 10 20

**www.igi.org**

## LABORATORY GROWN DIAMOND REPORT



October 10, 2024	
IGI Report Number	LG658485045
Description	LABORATORY GROWN DIAMOND
Shape and Cutting Style	PRINCESS CUT
Measurements	8.54 X 8.36 X 6.03 MM
GRADING RESULTS	
Carat Weight	3.82 CARATS
Color Grade	F
Clarity Grade	VVS 2



### ADDITIONAL GRADING INFORMATION

Polish	EXCELLENT
Symmetry	EXCELLENT
Fluorescence	NONE
Inscription(s)	 LG658485045
<p>Comments: This Laboratory Grown Diamond was created by Chemical Vapor Deposition (CVD) growth process.</p> <p>Type IIa</p>	



October 10, 2024  
 IGI Report No LG658485045  
 PRINCESS CIT

5.54 X 8.36 X 0.03 MM	Carat Weight	3.82 CARATS
	Color Grade	F
	Clarity Grade	VVS 2
	Depth	72.1%
	Table	66%
	Grade	Medium
	Culet	Pointed
	Polish	EXCELLENT
	Symmetry	EXCELLENT
	Fluorescence	NONE

**Comments:**  
This Laboratory Grown Diamond was created by Chemical Vapor Deposition (CVD) growth process.