



ELECTRONIC COPY

LABORATORY GROWN DIAMOND REPORT

October 17, 2024	
IGI Report Number	LG658481104
Description	LABORATORY GROWN DIAMOND
Shape and Cutting Style	ROUND BRILLIANT
Measurements	7.44 - 7.47 X 4.66 MM
GRADING RESULTS	
Carat Weight	1.60 CARAT
Color Grade	FANCY LIGHT YELLOW
Clarity Grade	SI 1
Cut Grade	IDEAL

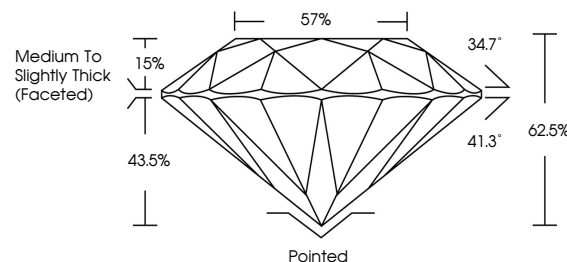
ADDITIONAL GRADING INFORMATION

Polish	EXCELLENT
Symmetry	EXCELLENT
Fluorescence	NONE
Inscription(s)	131 LG658481104

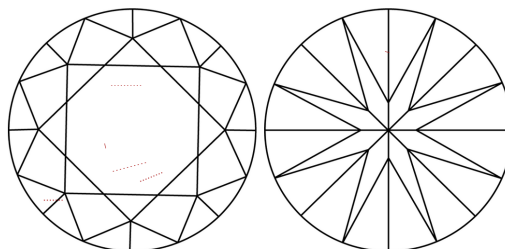
Comments: This Laboratory Grown Diamond was created by Chemical Vapor Deposition (CVD) growth process.

LG658481104
Report verification at lgi.org

PROPORTIONS

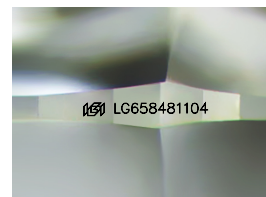


CLARITY CHARACTERISTICS



KEY TO SYMBOLS

Red symbols indicate internal characteristics.
Green symbols indicate external characteristics.



Sample Image Used

COLOR

D E F G H I J Faint Very Light Light

CLARITY

IF	VVS ^{1,2}	VS ^{1,2}	SI ^{1,2}	I ^{1,3}
Internally Flawless	Very Very Slightly Included	Very Slightly Included	Slightly Included	Included



© IGI 2020, International Gemological Institute

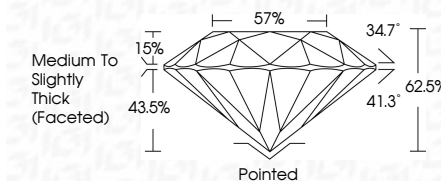
FD - 10 20

www.igi.org

LABORATORY GROWN DIAMOND REPORT



Date	October 17, 2024
IGI Report Number	IG658481104
Description	LABORATORY GROWN DIAMOND
Shape and Cutting Style	ROUND BRILLIANT
Measurements	7.44 - 7.47 X 4.66 MM
GRADING RESULTS	
Carat Weight	1.60 CARAT
Color Grade	FANCY LIGHT YELLOW
Clarity Grade	SI 1
Cut Grade	IDEAL



ADDITIONAL GRADING INFORMATION

Polish	EXCELLENT
Symmetry	EXCELLENT
Fluorescence	NONE
Inscription(s)	 LG-658481104

Comments: This Laboratory Grown Diamond was created by Chemical Vapor Deposition (CVD) growth process.



October 17, 2024	Carat Weight	1.40 CARAT
GI Report No LG65481104	Color Grade	FANCY LIGHT YELLOW
ROUND BRILLIANT	Clarity Grade	S I 1
	Cut Grade	IDEAL
	Depth	62.5%
	Table	57%
	Grain	Medium to Slightly Thick (Faceted)
	Culet	Pointed
	Polish	EXCELLENT
	Symmetry	EXCELLENT
	Fluorescence	NONE
	Inclusions(s)	#69 LG65481104

Comments:

This Laboratory Grown Diamond was
 Verified by Chemical Vapor Deposition
 (CVD) Method