



ELECTRONIC COPY

LG658477421
Report verification at igi.org



October 15, 2024

IGI Report Number **LG658477421**

Description **LABORATORY GROWN DIAMOND**

Shape and Cutting Style **SQUARE CUSHION BRILLIANT**

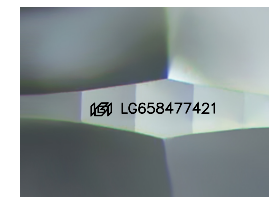
Measurements **6.40 X 6.14 X 4.23 MM**

GRADING RESULTS

Carat Weight **1.24 CARAT**

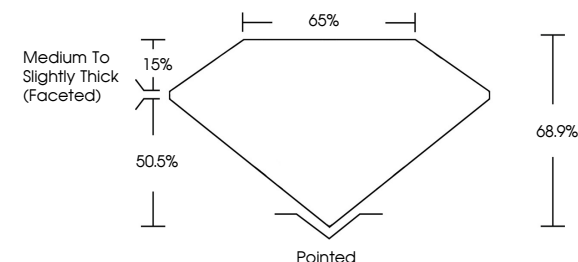
Color Grade **FANCY VIVID GREEN**

Clarity Grade **VS 1**

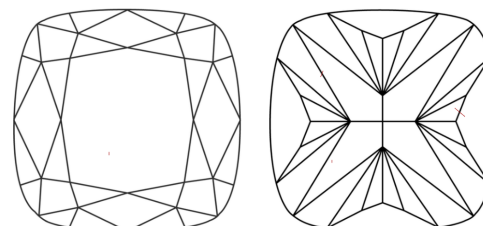


Sample Image Used

PROPORTIONS



CLARITY CHARACTERISTICS



KEY TO SYMBOLS

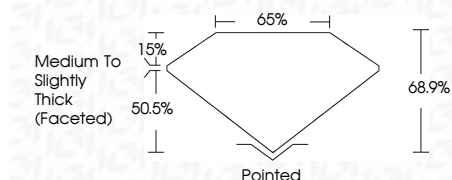
Red symbols indicate internal characteristics.
Green symbols indicate external characteristics.

COLOR

D	E	F	G	H	I	J	Faint	Very Light	Light
---	---	---	---	---	---	---	-------	------------	-------

CLARITY

IF	VS ¹⁻²	VS ¹⁻²	SI ¹⁻²	I ¹⁻³
Internally Flawless	Very Very Slightly Included	Very Slightly Included	Slightly Included	Included



ADDITIONAL GRADING INFORMATION

Polish **EXCELLENT**

Symmetry **EXCELLENT**

Fluorescence **NONE**

Inscription(s) **IGI LG658477421**

Comments: This Laboratory Grown Diamond was created by High Pressure High Temperature (HPHT) growth process. Indications of post-growth treatment.



October 15, 2024	IGI Report No LG658477421	SQUARE CUSHION BRILLIANT	1.24 CARAT	FANCY VIVID GREEN	VS 1	68.9%	65%	Medium to Slightly Thick (Faceted)	Pointed	EXCELLENT	EXCELLENT	NONE	IGI LG658477421
6.40 X 6.14 X 4.23 MM		Color Grade	Carat Weight	Clarity Grade	Table	Depth	Graile		Culet	Polish	Symmetry	Fluorescence	Inscription(s)

Comments: This Laboratory Grown Diamond was created by High Pressure High Temperature (HPHT) growth process. Indications of post-growth treatment.