



ELECTRONIC COPY

LG658476785
Report verification at igi.org

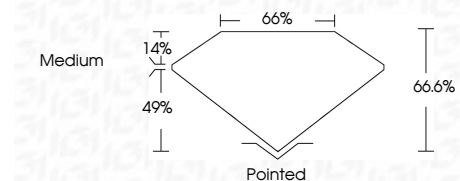


October 8, 2024
IGI Report Number LG658476785
Description LABORATORY GROWN DIAMOND
Shape and Cutting Style CUT CORNERED RECTANGULAR MODIFIED BRILLIANT

Measurements 12.20 X 9.00 X 5.99 MM

GRADING RESULTS

Carat Weight 5.78 CARATS
Color Grade E
Clarity Grade SI 1



ADDITIONAL GRADING INFORMATION

Polish EXCELLENT
Symmetry EXCELLENT
Fluorescence NONE
Inscription(s) LG658476785

Comments: This Laboratory Grown Diamond was created by Chemical Vapor Deposition (CVD) growth process. Type IIa



October 8, 2024
IGI Report No LG658476785
CUT CORNERED RECT. MODIFIED BRILLIANT
12.20 X 9.00 X 5.99 MM
5.78 CARATS
E
SI 1
66.6%
66%
Medium
Pointed
EXCELLENT
EXCELLENT
NONE
Inscription(s) LG658476785
Comments: This Laboratory Grown Diamond was created by Chemical Vapor Deposition (CVD) growth process. Type IIa

LABORATORY GROWN DIAMOND REPORT

October 8, 2024
IGI Report Number LG658476785
Description LABORATORY GROWN DIAMOND
Shape and Cutting Style CUT CORNERED RECTANGULAR MODIFIED BRILLIANT
Measurements 12.20 X 9.00 X 5.99 MM

GRADING RESULTS

Carat Weight 5.78 CARATS
Color Grade E
Clarity Grade SI 1

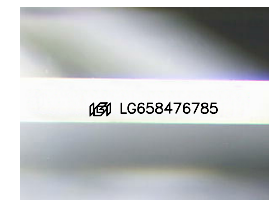
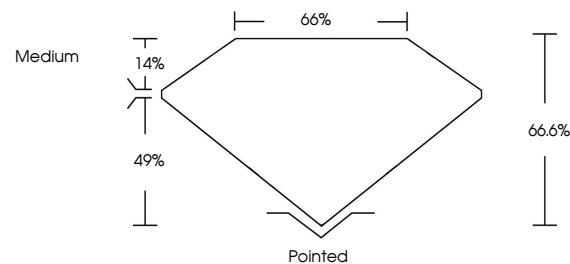
ADDITIONAL GRADING INFORMATION

Polish EXCELLENT
Symmetry EXCELLENT
Fluorescence NONE

Inscription(s) LG658476785

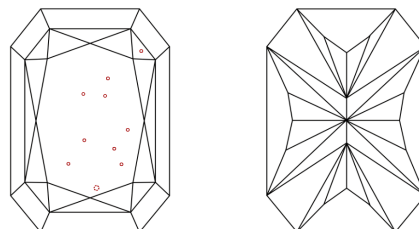
Comments: This Laboratory Grown Diamond was created by Chemical Vapor Deposition (CVD) growth process. Type IIa

PROPORTIONS



Sample Image Used

CLARITY CHARACTERISTICS



KEY TO SYMBOLS

Red symbols indicate internal characteristics.
Green symbols indicate external characteristics.

COLOR

D E F G H I J Faint Very Light Light

CLARITY

IF VS 1-2 VS 1-2 SI 1-2 I 1-3
Internally Flawless Very Very Slightly Included Very Slightly Included Slightly Included Included