



ELECTRONIC COPY

LG658476459
Report verification at igi.org



October 18, 2024

IGI Report Number LG658476459

Description LABORATORY GROWN DIAMOND

Shape and Cutting Style CUT CORNERED RECTANGULAR MODIFIED BRILLIANT

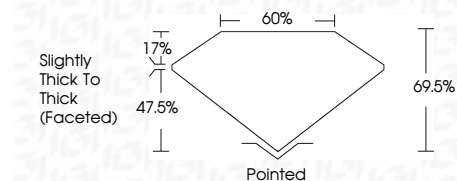
Measurements 12.12 X 8.82 X 6.13 MM

GRADING RESULTS

Carat Weight 6.29 CARATS

Color Grade FANCY VIVID PINK

Clarity Grade VVS 2



ADDITIONAL GRADING INFORMATION

Polish EXCELLENT

Symmetry EXCELLENT

Fluorescence SLIGHT

Inscription(s) LG658476459

Comments: This Laboratory Grown Diamond was created by Chemical Vapor Deposition (CVD) growth process. Indications of post-growth treatment.



October 18, 2024
IGI Report No LG658476459
CUT CORNERED RECT. MODIFIED BRILLIANT
12.12 X 8.82 X 6.13 MM
6.29 CARATS
FANCY VIVID PINK
VVS 2
69.5%
Slightly Thick To Thick (Faceted)
Pointed
EXCELLENT
EXCELLENT
SLIGHT
IGI LG658476459
Comments: This Laboratory Grown Diamond was created by Chemical Vapor Deposition (CVD) growth process. Indications of post-growth treatment.

October 18, 2024
IGI Report Number LG658476459
Description LABORATORY GROWN DIAMOND
Shape and Cutting Style CUT CORNERED RECTANGULAR MODIFIED BRILLIANT
Measurements 12.12 X 8.82 X 6.13 MM

GRADING RESULTS

Carat Weight 6.29 CARATS

Color Grade FANCY VIVID PINK

Clarity Grade VVS 2

ADDITIONAL GRADING INFORMATION

Polish EXCELLENT

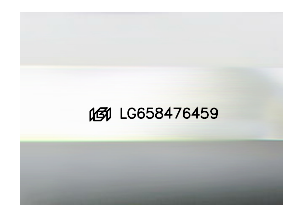
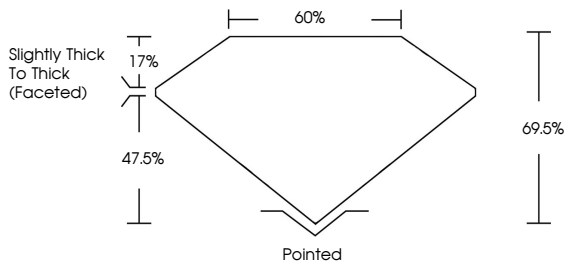
Symmetry EXCELLENT

Fluorescence SLIGHT

Inscription(s) LG658476459

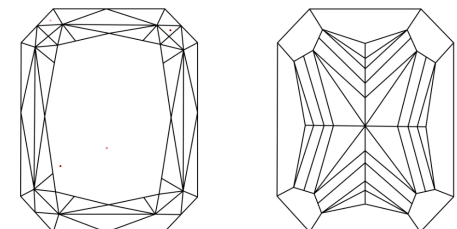
Comments: This Laboratory Grown Diamond was created by Chemical Vapor Deposition (CVD) growth process. Indications of post-growth treatment.

PROPORTIONS



Sample Image Used

CLARITY CHARACTERISTICS



KEY TO SYMBOLS

Red symbols indicate internal characteristics. Green symbols indicate external characteristics.

COLOR

D E F G H I J Faint Very Light Light

CLARITY

IF VVS 1-2 VS 1-2 SI 1-2 I 1-3
Internally Flawless Very Very Slightly Included Very Slightly Included Slightly Included Included

