



ELECTRONIC COPY

LG658476172
Report verification at igi.org



October 18, 2024
IGI Report Number LG658476172
Description LABORATORY GROWN DIAMOND
Shape and Cutting Style CUT CORNERED RECTANGULAR MODIFIED BRILLIANT
Measurements 7.09 X 4.74 X 3.44 MM
GRADING RESULTS
Carat Weight 1.09 CARAT
Color Grade FANCY VIVID PINK
Clarity Grade VVS 2

LABORATORY GROWN DIAMOND REPORT

October 18, 2024
IGI Report Number LG658476172
Description LABORATORY GROWN DIAMOND
Shape and Cutting Style CUT CORNERED RECTANGULAR MODIFIED BRILLIANT
Measurements 7.09 X 4.74 X 3.44 MM

GRADING RESULTS

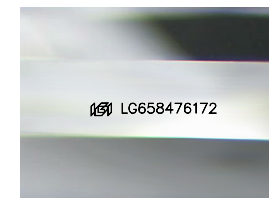
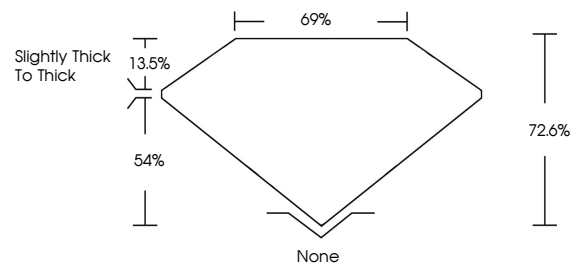
Carat Weight 1.09 CARAT
Color Grade FANCY VIVID PINK
Clarity Grade VVS 2

ADDITIONAL GRADING INFORMATION

Polish EXCELLENT
Symmetry VERY GOOD
Fluorescence SLIGHT
Inscription(s) LG658476172

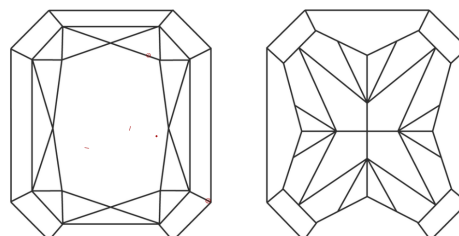
Comments: This Laboratory Grown Diamond was created by Chemical Vapor Deposition (CVD) growth process.
Indications of post-growth treatment.

PROPORTIONS



Sample Image Used

CLARITY CHARACTERISTICS



KEY TO SYMBOLS

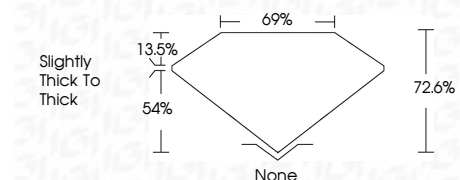
Red symbols indicate internal characteristics.
Green symbols indicate external characteristics.

COLOR

D E F G H I J Faint Very Light Light

CLARITY

Table mapping clarity grades (IF, VVS, VS, SI, I) to their descriptions (Internally Flawless, Very Very Slightly Included, etc.).



ADDITIONAL GRADING INFORMATION

Polish EXCELLENT
Symmetry VERY GOOD
Fluorescence SLIGHT
Inscription(s) LG658476172
Comments: This Laboratory Grown Diamond was created by Chemical Vapor Deposition (CVD) growth process.
Indications of post-growth treatment.



October 18, 2024
IGI Report No LG658476172
CUT CORNERED RECT. MODIFIED BRILLIANT
7.09 X 4.74 X 3.44 MM
1.09 CARAT
FANCY VIVID PINK
VVS 2
72.6%
69%
Slightly thick to thick
None
EXCELLENT
VERY GOOD
SLIGHT
LG658476172
Comments: This Laboratory Grown Diamond was created by Chemical Vapor Deposition (CVD) growth process.
Indications of post-growth treatment.