



**ELECTRONIC COPY**

## LABORATORY GROWN DIAMOND REPORT

October 10, 2024	
IGI Report Number	LG658475179
Description	LABORATORY GROWN DIAMOND
Shape and Cutting Style	CUT CORNERED RECTANGULAR MODIFIED BRILLIANT
Measurements	9.28 X 6.19 X 4.24 MM

## GRADING RESULTS

Carat Weight	2.09 CARATS
Color Grade	D
Clarity Grade	VS 2

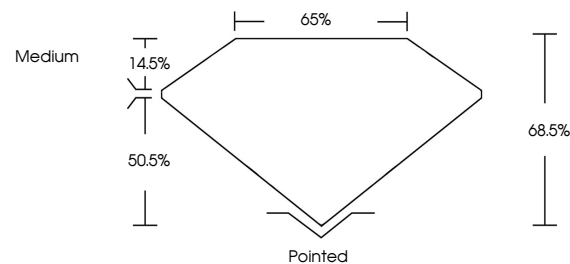
### ADDITIONAL GRADING INFORMATION

Polish	EXCELLENT
Symmetry	EXCELLENT
Fluorescence	NONE
Inscription(s)	 LG658475179

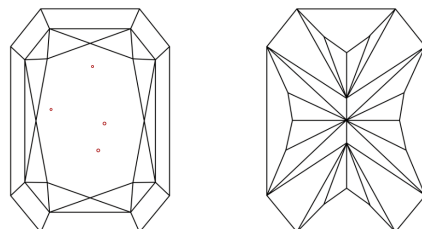
Comments: This Laboratory Grown Diamond was created by Chemical Vapor Deposition (CVD) growth process.  
Type IIa

LG658475179  
Report verification at lqi.org

## PROPORTIONS

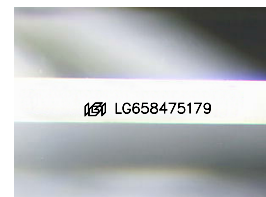


## CLARITY CHARACTERISTICS



## KEY TO SYMBOLS

Red symbols indicate internal characteristics.  
Green symbols indicate external characteristics.



Sample Image Used

## COLOR

D E F G H I J Faint Very Light Light

## CLARITY

IF	VVS <sup>1-2</sup>	VS <sup>1-2</sup>	SI <sup>1-2</sup>	I <sup>1-3</sup>
Internally Flawless	Very Very Slightly Included	Very Slightly Included	Slightly Included	Included



© IGI 2020, International Gemological Institute

FD - 10 20

**www.igi.org**

## LABORATORY GROWN DIAMOND REPORT

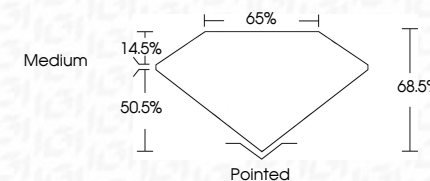


October 10, 2024	
IGI Report Number	LG658475179
Description	LABORATORY GROWN DIAMOND
Shape and Cutting Style	CUT CORNERED RECTANGULAR MODIFIED BRILLIANT

Measurements **9.28 X 6.19 X 4.24 MM**

## GRADING RESULTS

Carat Weight	2.09 CARATS
Color Grade	D
Clarity Grade	VS 2



### ADDITIONAL GRADING INFORMATION

Polish	EXCELLENT
Symmetry	EXCELLENT
Fluorescence	NONE
Inscription(s)	18 LG 658475175

Comments: This Laboratory Grown Diamond was created by Chemical Vapor Deposition (CVD) growth process.  
Type IIa



October 10, 2024	GI Report No. LG589475179	2109 CARATS
CLT CORNERED RECT. MODIFIED BRILLIANT		D
		VS 2
		68.0%
		65%
		Medium
		Pointed
		EXCELLENT
		EXCELLENT
		NONE
		(68) LG589475179
Carat Weight	Color Grade	Clarity Grade
28.28 X 4.19 X 4.24 MM		
		Depth
		table
		Grade
		Cut
		Color
		Symmetry
		Fluorescence
		Inscriptions(s)
Comments:	The Laboratory Grown Diamond was examined using Laser Vapor Deposition (LVD) growth process. type IIG	