



ELECTRONIC COPY

LABORATORY GROWN DIAMOND REPORT

October 9, 2024	
IGI Report Number	LG658474477
Description	LABORATORY GROWN DIAMOND
Shape and Cutting Style	MARQUISE BRILLIANT
Measurements	10.91 X 5.87 X 3.73 MM

GRADING RESULTS

Carat Weight	1.36 CARAT
Color Grade	E
Clarity Grade	VS 2

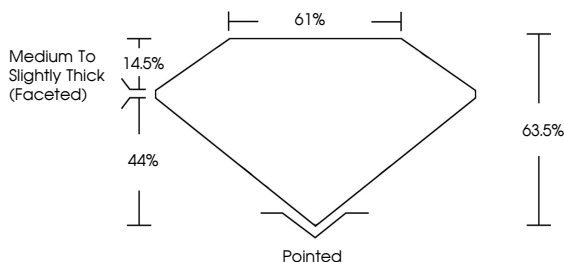
ADDITIONAL GRADING INFORMATION

Polish	EXCELLENT
Symmetry	EXCELLENT
Fluorescence	NONE
Inscription(s)	 LG6584744777

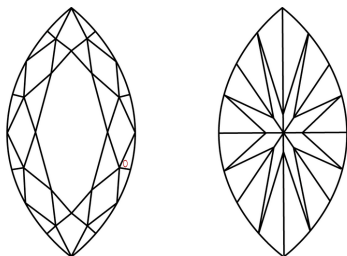
Comments: This Laboratory Grown Diamond was created by Chemical Vapor Deposition (CVD) growth process.
Type IIa

LG658474477
Report verification at igi.org

PROPORTIONS

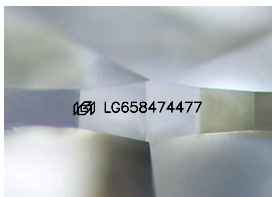


CLARITY CHARACTERISTICS



KEY TO SYMBOLS

Red symbols indicate internal characteristics.
Green symbols indicate external characteristics.



Sample Image Used

COLOR

D E F G H I J Faint Very Light Light

CLARITY

IF	VVS ¹⁻²	VS ¹⁻²	SI ¹⁻²	I ¹⁻³
Internally Flawless	Very Very Slightly Included	Very Slightly Included	Slightly Included	Included



© IGI 2020, International Gemological Institute

FD - 10 20

www.igi.org

LABORATORY GROWN DIAMOND REPORT



October 9, 2024	
IGI Report Number	LG658474477
Description	LABORATORY GROWN DIAMOND
Shape and Cutting Style	MARQUISE BRILLIANT
Measurements	10.91 X 5.87 X 3.73 MM

GRADING RESULTS

Carat Weight	1.36 CARAT
Color Grade	E
Clarity Grade	VS 2

ADDITIONAL GRADING INFORMATION

Polish	EXCELLENT
Symmetry	EXCELLENT
Fluorescence	NONE
Inscription(s)	 LG658474477

Comments: This Laboratory Grown Diamond was created by Chemical Vapor Deposition (CVD) growth process.
Type IIa



October 9, 2024
 CGI Report No LG658474477
 MARQUISE BRILLIANT

10.91 X 5.87 X 3.73 MM		1.36 CARAT	
Carat Weight			
Color Grade			
Clarity Grade		VS 2	
Depth		63.5%	
Table		61%	
Girdle		Medium To Slightly Thick (Faceted)	
Culet		Pointed	
Polish		EXCELLENT	
Symmetry		EXCELLENT	
Fluorescence		NONE	
Inscription(s)			(69) LG56567477

Comments:
This Laboratory Grown Diamond was created by Chemical Vapor Deposition (CVD) growth process, type IIa