



ELECTRONIC COPY

LABORATORY GROWN DIAMOND REPORT

October 9, 2024	
IGI Report Number	LG658473373
Description	LABORATORY GROWN DIAMOND
Shape and Cutting Style	CUT CORNERED RECTANGULAR MODIFIED BRILLIANT
Measurements	7.97 X 5.78 X 3.93 MM

GRADING RESULTS

Carat Weight	1.57 CARAT
Color Grade	D
Clarity Grade	VS 1

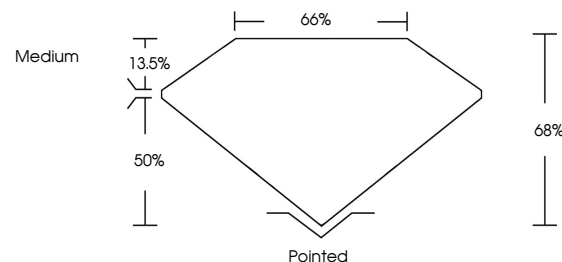
ADDITIONAL GRADING INFORMATION

Polish	EXCELLENT
Symmetry	EXCELLENT
Fluorescence	NONE
Inscription(s)	 LG658473373

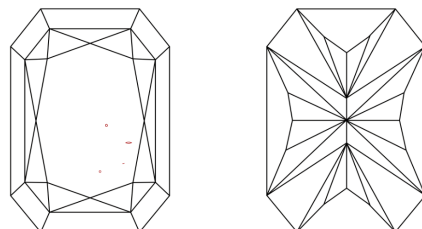
Comments: This Laboratory Grown Diamond was created by Chemical Vapor Deposition (CVD) growth process.
Type IIa

LG658473373
Report verification at lgi.org

PROPORTIONS

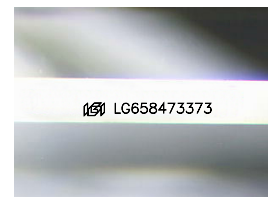


CLARITY CHARACTERISTICS



KEY TO SYMBOLS

Red symbols indicate internal characteristics.
Green symbols indicate external characteristics.



Sample Image Used

COLOR

D E F G H I J Faint Very Light Light

CLARITY

IF	VVS ^{1,2}	VS ^{1,2}	SI ^{1,2}	I ^{1,3}
Internally Flawless	Very Very Slightly Included	Very Slightly Included	Slightly Included	Included

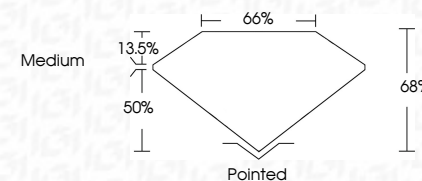
LABORATORY GROWN DIAMOND REPORT



October 9, 2024	
IGI Report Number	LG658473373
Description	LABORATORY GROWN DIAMOND
Shape and Cutting Style	CUT CORNERED RECTANGULAR MODIFIED BRILLIANT
Measurements	7.97 X 5.78 X 3.93 MM

GRADING RESULTS

Carat Weight	1.57 CARAT
Color Grade	D
Clarity Grade	VS 1



ADDITIONAL GRADING INFORMATION

Polish	EXCELLENT
Symmetry	EXCELLENT
Fluorescence	NONE
Inscription(s)	(GSI) LG658473373
<p>Comments: This Laboratory Grown Diamond was created by Chemical Vapor Deposition (CVD) growth process.</p> <p>Type IIa</p>	



© IGI 2020, International Gemological Institute

FD - 10 20



October 9, 2024	1.97 X 5.78 X 3.93 MM	1.57 CARAT
GI Report NO LGAS9473373	Carat Weight	VS 1
CU CORNERED RECT. MODIFIED BRILLIANT	Color Grade	66%
	Clarity Grade	66%
	Depth	Medium
	Table	Pointed
	Grade	EXCELLENT
	Culet	EXCELLENT
	Polish	NONE
	Symmetry	EXCELLENT
	Fluorescence	NONE
	Measurements (mm)	see LGAS9473373

Comments:
This Laboratory Grown Diamond was
created by Chemical Vapor Deposition
(CVD) growth process.