



**ELECTRONIC COPY**

## LABORATORY GROWN DIAMOND REPORT

October 9, 2024	
IGI Report Number	LG658472203
Description	LABORATORY GROWN DIAMOND
Shape and Cutting Style	CUT CORNERED RECTANGULAR MODIFIED BRILLIANT
Measurements	7.99 X 5.57 X 3.65 MM

## GRADING RESULTS

Carat Weight	1.41 CARAT
Color Grade	D
Clarity Grade	VS 2

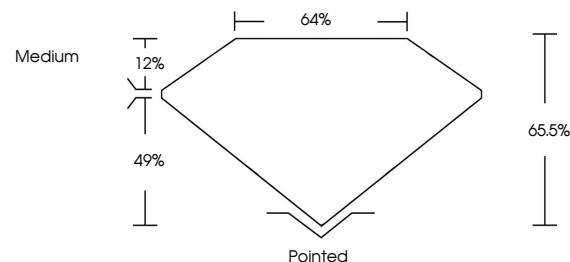
### ADDITIONAL GRADING INFORMATION

Polish	EXCELLENT
Symmetry	EXCELLENT
Fluorescence	NONE
Inscription(s)	 LG658472203

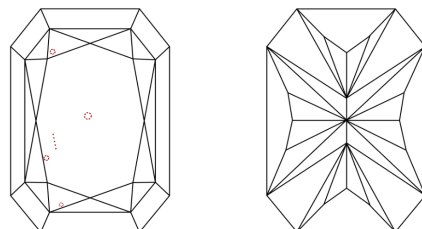
Comments: This Laboratory Grown Diamond was created by Chemical Vapor Deposition (CVD) growth process.  
Type IIa

LG658472203  
Report verification at lqi.org

## PROPORTIONS

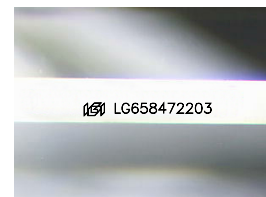


## CLARITY CHARACTERISTICS



### KEY TO SYMBOLS

Red symbols indicate internal characteristics.  
Green symbols indicate external characteristics.



Sample Image Used

**COLOR**

D E F G H I J Faint Very Light Light

## CLARITY

IF	VVS <sup>1-2</sup>	VS <sup>1-2</sup>	SI <sup>1-2</sup>	I <sup>1-3</sup>
Internally Flawless	Very Very Slightly Included	Very Slightly Included	Slightly Included	Included



© IGI 2020, International Gemological Institute

FD - 10 20

**www.igi.org**

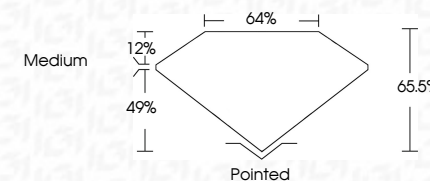
## LABORATORY GROWN DIAMOND REPORT



October 9, 2024	
IGI Report Number	LG658472203
Description	LABORATORY GROWN DIAMOND
Shape and Cutting Style	CUT CORNERED RECTANGULAR MODIFIED BRILLIANT
Measurements	7.99 X 5.57 X 3.65 MM

### GRADING RESULTS

Carat Weight	1.41 CARAT
Color Grade	D
Clarity Grade	VS 2



### ADDITIONAL GRADING INFORMATION

Polish	EXCELLENT
Symmetry	EXCELLENT
Fluorescence	NONE
Inscription(s)	(GSI) LG658472203
<p>Comments: This Laboratory Grown Diamond was created by Chemical Vapor Deposition (CVD) growth process.</p> <p>Type IIa</p>	



IG

October 9, 2024	GI Report No LG569472203	CUT CORNERED RECT. MODIFIED BRILLIANT
99.99 X 5.97 X 3.65 MM	Carat Weight	1.41 CARAT
	Color Grade	Vs2 D
	Clarity Grade	Vs2
	Depth	65.0%
	Table	64%
	Girdle	Medium
	Culet	Pointed
	Polish	EXCELLENT
	Symmetry	EXCELLENT
	Fluorescence	NONE
	Inscriptions(s)	681 LG569472203
<p>Comments:          This Laboratory Grown Diamond was          created by Chemical Vapor Deposition          (CVD) growth process.          Type IIa</p>		