



ELECTRONIC COPY

LG657461546
Report verification at igi.org



October 11, 2024
IGI Report Number **LG657461546**
Description **LABORATORY GROWN DIAMOND**
Shape and Cutting Style **CUSHION BRILLIANT**
Measurements **12.30 X 8.88 X 5.75 MM**
GRADING RESULTS
Carat Weight **5.36 CARATS**
Color Grade **FANCY VIVID GREEN**
Clarity Grade **VS 1**

October 11, 2024
IGI Report Number **LG657461546**
Description **LABORATORY GROWN DIAMOND**
Shape and Cutting Style **CUSHION BRILLIANT**
Measurements **12.30 X 8.88 X 5.75 MM**

GRADING RESULTS

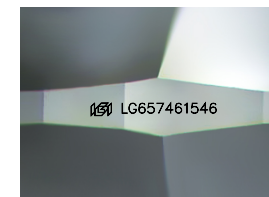
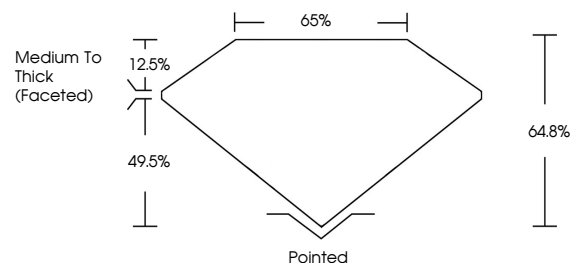
Carat Weight **5.36 CARATS**
Color Grade **FANCY VIVID GREEN**
Clarity Grade **VS 1**

ADDITIONAL GRADING INFORMATION

Polish **EXCELLENT**
Symmetry **EXCELLENT**
Fluorescence **VERY SLIGHT**
Inscription(s) **IGI LG657461546**

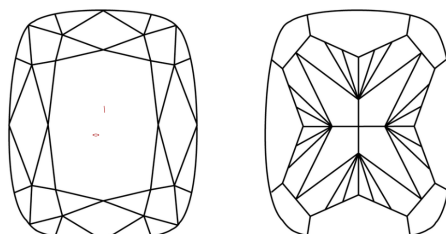
Comments: This Laboratory Grown Diamond was created by Chemical Vapor Deposition (CVD) growth process.
Indications of post-growth treatment.

PROPORTIONS



Sample Image Used

CLARITY CHARACTERISTICS



KEY TO SYMBOLS

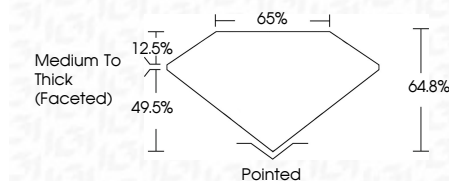
Red symbols indicate internal characteristics.
Green symbols indicate external characteristics.

COLOR

D E F G H I J Faint Very Light Light

CLARITY

IF	VS ¹⁻²	VS ¹⁻²	SI ¹⁻²	I ¹⁻³
Internally Flawless	Very Very Slightly Included	Very Slightly Included	Slightly Included	Included



ADDITIONAL GRADING INFORMATION

Polish **EXCELLENT**
Symmetry **EXCELLENT**
Fluorescence **VERY SLIGHT**
Inscription(s) **IGI LG657461546**

Comments: This Laboratory Grown Diamond was created by Chemical Vapor Deposition (CVD) growth process.
Indications of post-growth treatment.



October 11, 2024
IGI Report No LG657461546
CUSHION BRILLIANT
12.30 X 8.88 X 5.75 MM
5.36 CARATS
FANCY VIVID GREEN
Color Grade
Clarity Grade VS 1
Table 64.8%
Depth 49.5%
Girdle Medium To Thick (Faceted)
Culet Pointed
Polish EXCELLENT
Symmetry EXCELLENT
Fluorescence VERY SLIGHT
Inscription(s) IGI LG657461546
Comments: This Laboratory Grown Diamond was created by Chemical Vapor Deposition (CVD) growth process.
Indications of post-growth treatment.